

ORIGINALSTYLE  
GLASSWORKS

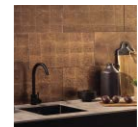
# reflect on the brilliance of glass

**Glass.** It's been used in the decoration of buildings for a thousand years or more, and its reflective qualities are continually being redefined.

Enjoy the translucent beauty of this versatile and colourful material on interior walls throughout the home with our latest **Glassworks** collection.

decorative effects

05



mirror tiles & mosaics

21



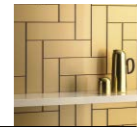
glass bricks

29



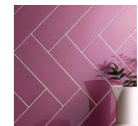
metallic & sparkle

43



simply colour

59





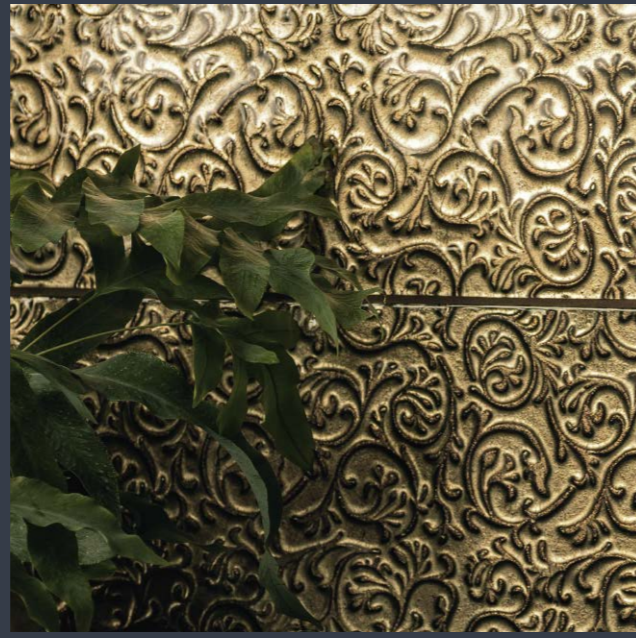
## decorative effects



A delightful range of large format tiles, featuring striking designs, patterns and textures all captured under glass, for captivating depth and beauty.

In this section:  
**metallic leaf** – masterpieces of precious metal (including real gold, real silver and other metallic effects) encapsulated in glass  
**decorative special effects** – a variety of stunning decorative effects  
**aurora borealis** – vivid, shimmering metallics

Opposite: Copper Leaf Ripple GW-CFRPL6030 - copper-effect foil  
Above: Beauville Black GW-BFB6030P - etched pattern

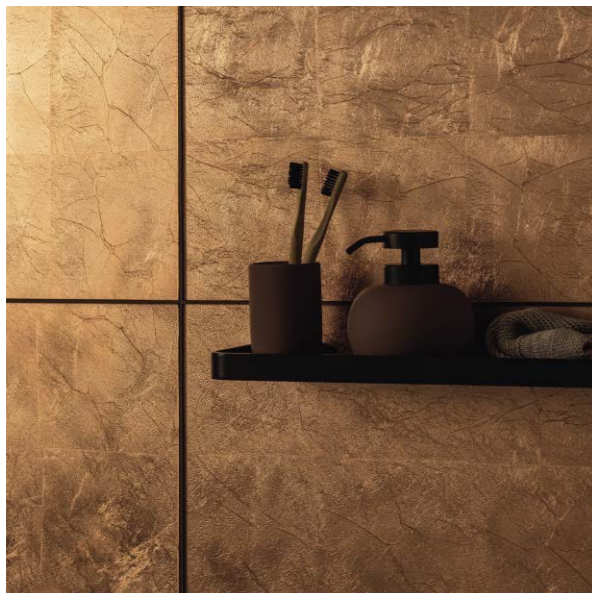


Top left: Paua GW-PAU6030 - opalescent marbled pattern / Top Right: Amun Ra GW-AMR6030 - embossed metal-effect  
Above: Damask Gold GW-DMK6030 - antiqued metallic design, shown with Artworks Jet Black Half Tiles N9002

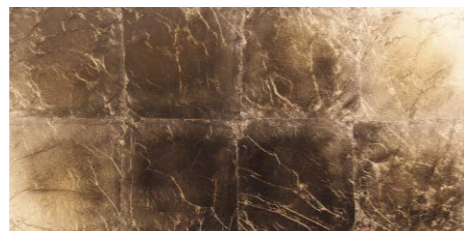
## Go Large

Add drama to any setting. Large format glass tiles can be used to transform a room, reflect light or to create dazzling effects. Whether it's a kitchen splashback or bathroom wall, you can be sure that these tiles will create a glamorous, chic space.

Shown here: Aduro GW-ADR6030 - a white pearl-effect



metallic leaf  
Giza



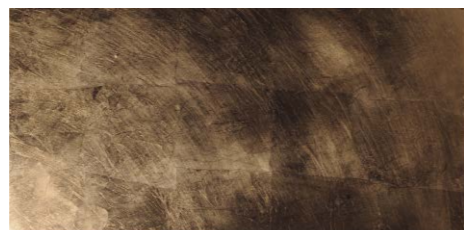
Detail

GW-GZA6030  
600 x 300 x 6mm (11<sup>3</sup>/<sub>16</sub>" x 23<sup>5</sup>/<sub>8</sub>" x <sup>5</sup>/<sub>16</sub>" )

Incorporates a thin layer of beaten foil beneath the glass surface



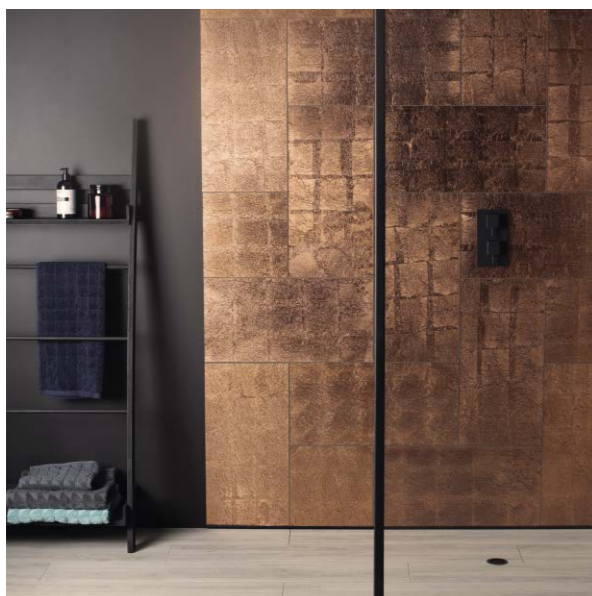
metallic leaf  
Copper Leaf



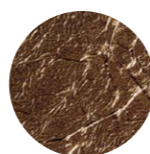
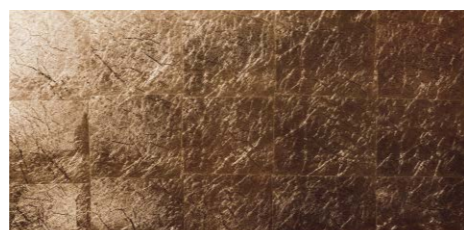
Detail

GW-CLF6030  
600 x 300 x 8mm (11<sup>3</sup>/<sub>16</sub>" x 23<sup>5</sup>/<sub>8</sub>" x <sup>5</sup>/<sub>16</sub>" )

Incorporates a thin layer of beaten foil beneath the glass surface



metallic leaf  
Copper Leaf Bold



Detail

GW-CFBLP6030  
600 x 300 x 8mm (11<sup>3</sup>/<sub>16</sub>" x 23<sup>5</sup>/<sub>8</sub>" x <sup>5</sup>/<sub>16</sub>" )

Incorporates a thin copper leaf effect foil with a pronounced texture



metallic leaf  
Copper Leaf Ripple

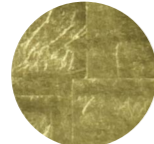


Detail

GW-CFRPL6030  
600 x 300 x 8mm (11<sup>3</sup>/<sub>16</sub>" x 23<sup>5</sup>/<sub>8</sub>" x <sup>5</sup>/<sub>16</sub>" )

Incorporates a thin copper leaf effect foil with a deeply rippled texture

metallic leaf  
**Cleopatra**



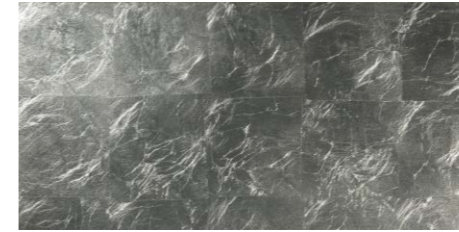
Detail

GW-CLE6030  
600 x 300 x 9mm (11<sup>3</sup>/<sub>16</sub>" x 23<sup>5</sup>/<sub>8</sub>" x 5/<sub>16</sub>")

Incorporates the thinnest layer of real gold foil beneath the glass



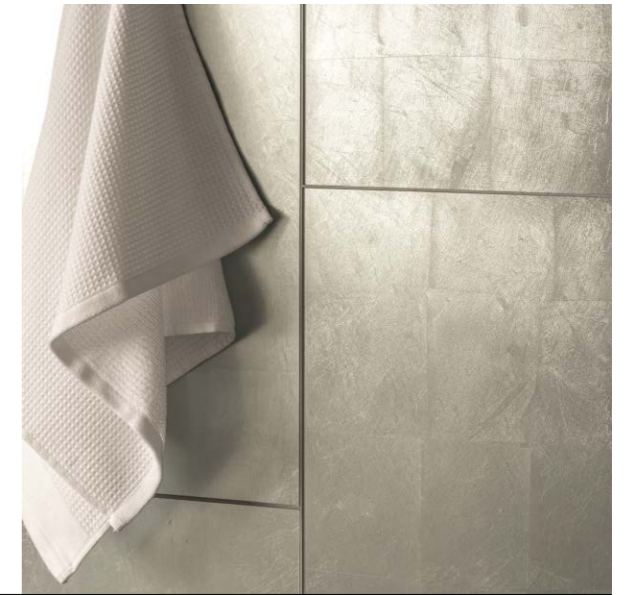
metallic leaf  
**Karnak**



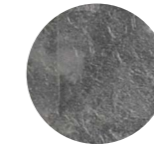
Detail

GW-KNK6030  
600 x 300 x 9mm (11<sup>3</sup>/<sub>16</sub>" x 23<sup>5</sup>/<sub>8</sub>" x 5/<sub>16</sub>")

Incorporates the thinnest layer of real silver foil beneath the glass



metallic leaf  
**Silver Leaf**



Detail

GW-SLF6030  
600 x 300 x 8mm (11<sup>3</sup>/<sub>16</sub>" x 23<sup>5</sup>/<sub>8</sub>" x 5/<sub>16</sub>")

Incorporates a thin layer of silver-effect foil beneath the glass surface



metallic leaf  
**Gold Leaf**

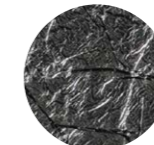


Detail

GW-GLF6030  
600 x 300 x 9mm (11<sup>3</sup>/<sub>16</sub>" x 23<sup>5</sup>/<sub>8</sub>" x 5/<sub>16</sub>")

A bright and glossy gold foil effect

metallic leaf  
**Silver Leaf Bold**



Detail

GW-SFBLP6030  
600 x 300 x 8mm (11<sup>3</sup>/<sub>16</sub>" x 23<sup>5</sup>/<sub>8</sub>" x 5/<sub>16</sub>")

Incorporates a thin silver leaf effect foil with a pronounced textures





decorative glass  
Amun-Ra



Detail

GW-AMR6030  
600 x 300 x 9mm (11<sup>3</sup>/<sub>16</sub>" x 23<sup>3</sup>/<sub>8</sub>" x 5/16")

Intricate entwining patterns that look like ancient designs, in gold



decorative glass  
Tutankhamun



Detail

GW-TUT6030  
600 x 300 x 9mm (11<sup>3</sup>/<sub>16</sub>" x 23<sup>3</sup>/<sub>8</sub>" x 5/16")

Intricate entwining patterns that look like ancient designs, in wrought metal



decorative glass  
Pharaoh



Detail

GW-PHR6030  
600 x 300 x 9mm (11<sup>3</sup>/<sub>16</sub>" x 23<sup>3</sup>/<sub>8</sub>" x 5/16")

Intricate entwining patterns that look like ancient designs, in silver



decorative glass  
Damask Rose Gold new



Detail\*



Examples of typical variation between tiles

GW-DMK6030  
600 x 300 x 6mm  
(11<sup>3</sup>/<sub>16</sub>" x 23<sup>3</sup>/<sub>8</sub>" x 1/4")

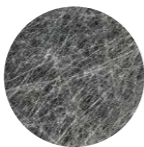
Faded and distressed damask pattern over an antiqued metallic base.

\* Due to the random antiquing effects applied to these tiles, details may vary dramatically between individual pieces and from the images shown here. Tiles should be laid out prior to fixing to ensure a pleasing distribution of design details.





decorative glass  
Spun Silk



Detail

GW-WWSLV6030  
600 x 300 x 8mm (11<sup>3</sup>/<sub>16</sub>" x 23<sup>3</sup>/<sub>8</sub>" x 5/<sub>16</sub>" )

A complex network silk-like threads on a black background



decorative glass  
Beauville Black



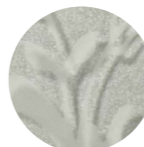
Detail

GW-BFB6030P  
600 x 300 x 6mm (11<sup>3</sup>/<sub>16</sub>" x 23<sup>3</sup>/<sub>8</sub>" x 1/<sub>4</sub>" )

Elegant black satin tendrils in a repeating pattern, on black gloss



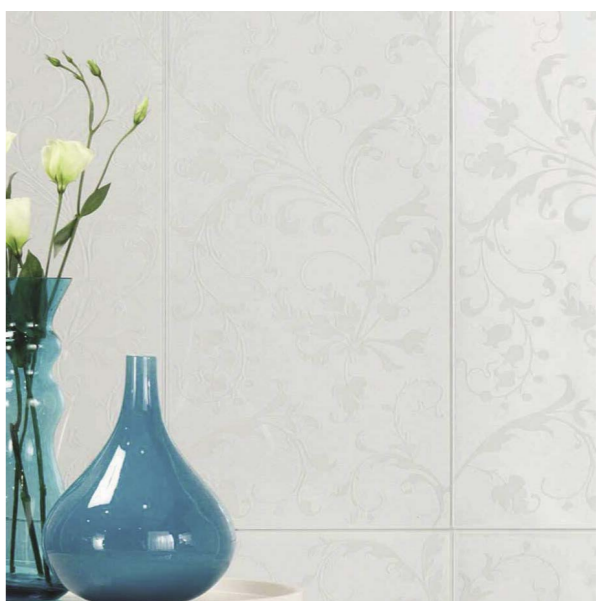
decorative glass  
Beauville Silver



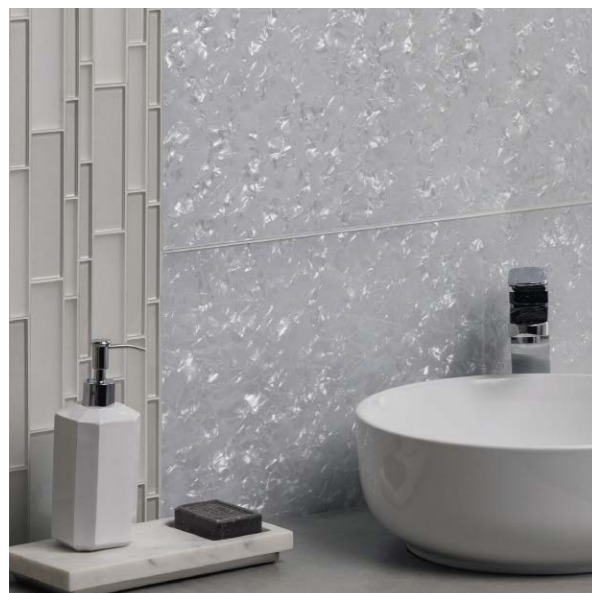
Detail

GW-BFS6030P  
600 x 300 x 6mm (11<sup>3</sup>/<sub>16</sub>" x 23<sup>3</sup>/<sub>8</sub>" x 1/<sub>4</sub>" )

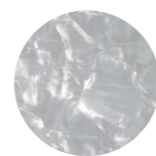
Elegant silver satin tendrils in a repeating pattern, on silver gloss







decorative glass  
Arctic Crushed Pearl



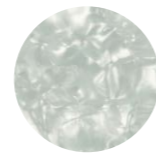
Detail

GW-ACP6030  
600 x 300 x 8mm (11<sup>3</sup>/<sub>16</sub>" x 23<sup>5</sup>/<sub>8</sub>" x 5<sup>1</sup>/<sub>16</sub>"

Ice white crushed pearl effect, encapsulated in a sheet of glass



decorative glass  
Crushed Pearl



Detail

GW-CPL6030  
600 x 300 x 9mm (11<sup>3</sup>/<sub>16</sub>" x 23<sup>5</sup>/<sub>8</sub>" x 3<sup>3</sup>/<sub>8</sub>"

The appearance of crushed pearls, encapsulated in a sheet of glass



decorative glass  
Aduro

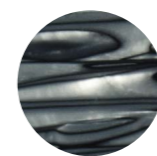


Detail

GW-ADR6030  
600 x 300 x 9mm (11<sup>3</sup>/<sub>16</sub>" x 23<sup>5</sup>/<sub>8</sub>" x 3<sup>3</sup>/<sub>8</sub>"

Lustrous, pearly effects that shimmer and attract the light

decorative glass  
Caeli



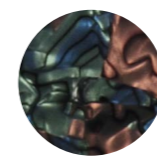
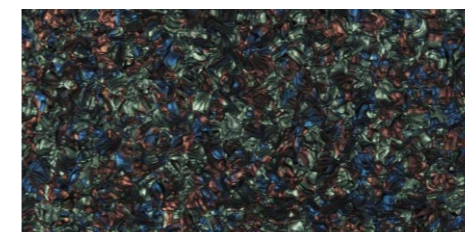
Detail

GW-CAE6030  
600 x 300 x 9mm (11<sup>3</sup>/<sub>16</sub>" x 23<sup>5</sup>/<sub>8</sub>" x 3<sup>3</sup>/<sub>8</sub>"

Similar to Aduro, but with mysterious undertones in grey and black



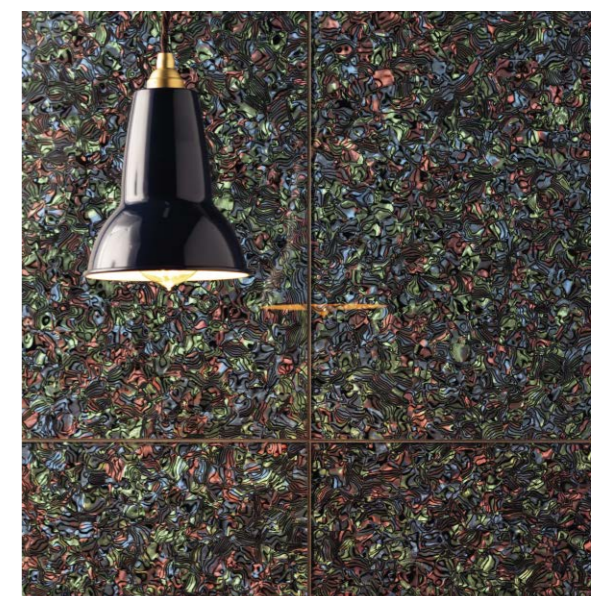
decorative glass  
Paua



Detail

GW-PAU6030  
600 x 300 x 9mm (11<sup>3</sup>/<sub>16</sub>" x 23<sup>5</sup>/<sub>8</sub>" x 3<sup>3</sup>/<sub>8</sub>"

All the vibrant colours of abalone shells



decorative glass  
Solstice



Detail

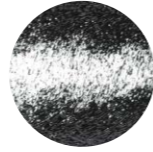
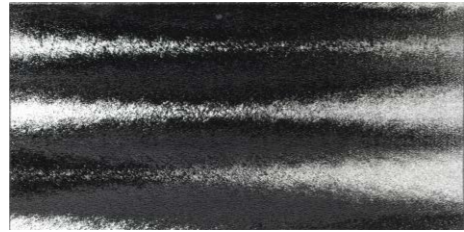
GW-SOL6030  
600 x 300 x 9mm (11<sup>3</sup>/<sub>16</sub>" x 23<sup>5</sup>/<sub>8</sub>" x 3<sup>3</sup>/<sub>8</sub>"

Look closely to see a galaxy of stars in a dark night sky





aurora borealis  
Dark Silver



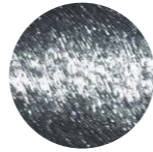
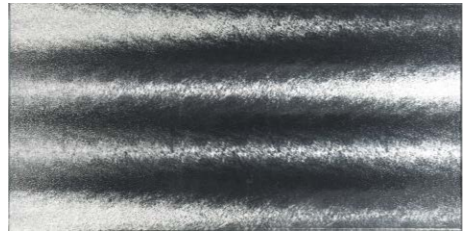
Detail

GW-DSR6030  
600 x 300 x 6mm (11<sup>3</sup>/<sub>16</sub>" x 23<sup>5</sup>/<sub>8</sub>" x 1/4")

Shimmering dark silver effects, with a gloss finish



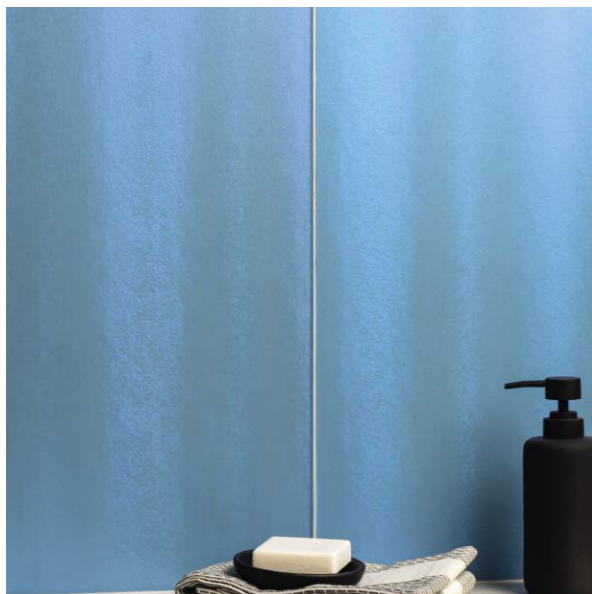
aurora borealis  
Silver



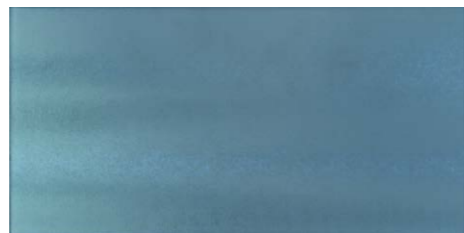
Detail

GW-SRB6030  
600 x 300 x 6mm (23<sup>5</sup>/<sub>8</sub>" x 11<sup>3</sup>/<sub>16</sub>" x 1/4")

Shimmering silver effects, with a gloss finish



aurora borealis  
Aqua Frosted



Detail

GW-AQA6030F  
600 x 300 x 6mm (11<sup>3</sup>/<sub>16</sub>" x 23<sup>5</sup>/<sub>8</sub>" x 1/4")

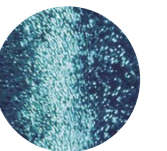
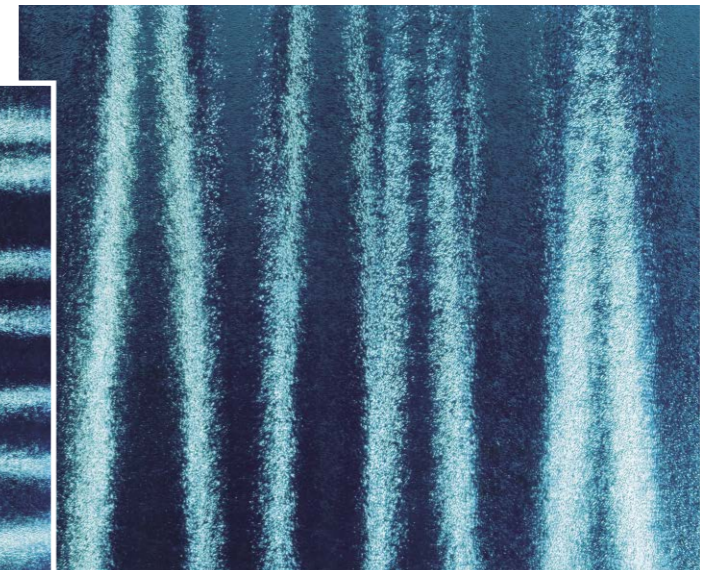
Ever changing green - blue spectrum rainbow colours, with a frosted finish



aurora borealis  
Aqua



Textured waves of metallic shimmer and a glossy finish – like the sun glistening on water



Detail

Splashback GW-AQA3606C  
900 x 750 x 6mm / 29<sup>1</sup>/<sub>2</sub>" x 35<sup>7</sup>/<sub>16</sub>" x 3/8"

Splashback GW-AQA2406C  
600 x 750 x 6mm / 23<sup>5</sup>/<sub>8</sub>" x 29<sup>1</sup>/<sub>2</sub>" x 3/8"



## mirror tiles & mosaics



Create a sense of space and radiate light around your room with our extremely popular and timeless mirror collection. There are antique effects, large formats, bevelled bricks and faceted mosaics, all perfect for achieving different looks.

In this section:

- antique white** – traditional silver foil mirror with a lovely patina of age
- antique grey** – dark tinted mirror with an antiqued foil backing
- antique mirror bevelled** – aged and sepia-toned mirror with prismatic edges
- antique mirror copper** – a rich copper mirror with aged foil
- silver mirror** – traditional 'plain' mirror tiles and mosaics with bevelled & faceted edges

Opposite: Antique Mirror White GW-ANTWH6030  
Above: Silver Mirror Facet Mosaic GW-SMRMMOS



## The 4th dimension

Create a greater sense of space with the magical properties of mirror. Choose traditional Silver Mirror or create a chic boudoir style with smoky Copper or Antique effects

Top: Antique Mirror Grey Facet Mosaic GW-ANTGRMMOS  
 Above Left: Antique Mirror Grey GW-ANTGR3010 / Above Right: Antique Mirror Bevel GW-ANT2010B

Shown here:  
 Silver Mirror GW-MIR2010B

mirror  
Antique Mirror White



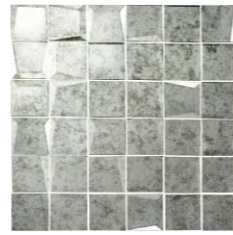
GW-ANTWH2008B  
200 x 75 x 8mm  
3" x 7<sup>7</sup>/<sub>8</sub>" x 5<sup>1</sup>/<sub>6</sub>"



GW-ANTWH3010  
300 x 100 x 6mm  
4" x 11<sup>3</sup>/<sub>4</sub>" x 1<sup>1</sup>/<sub>4</sub>"



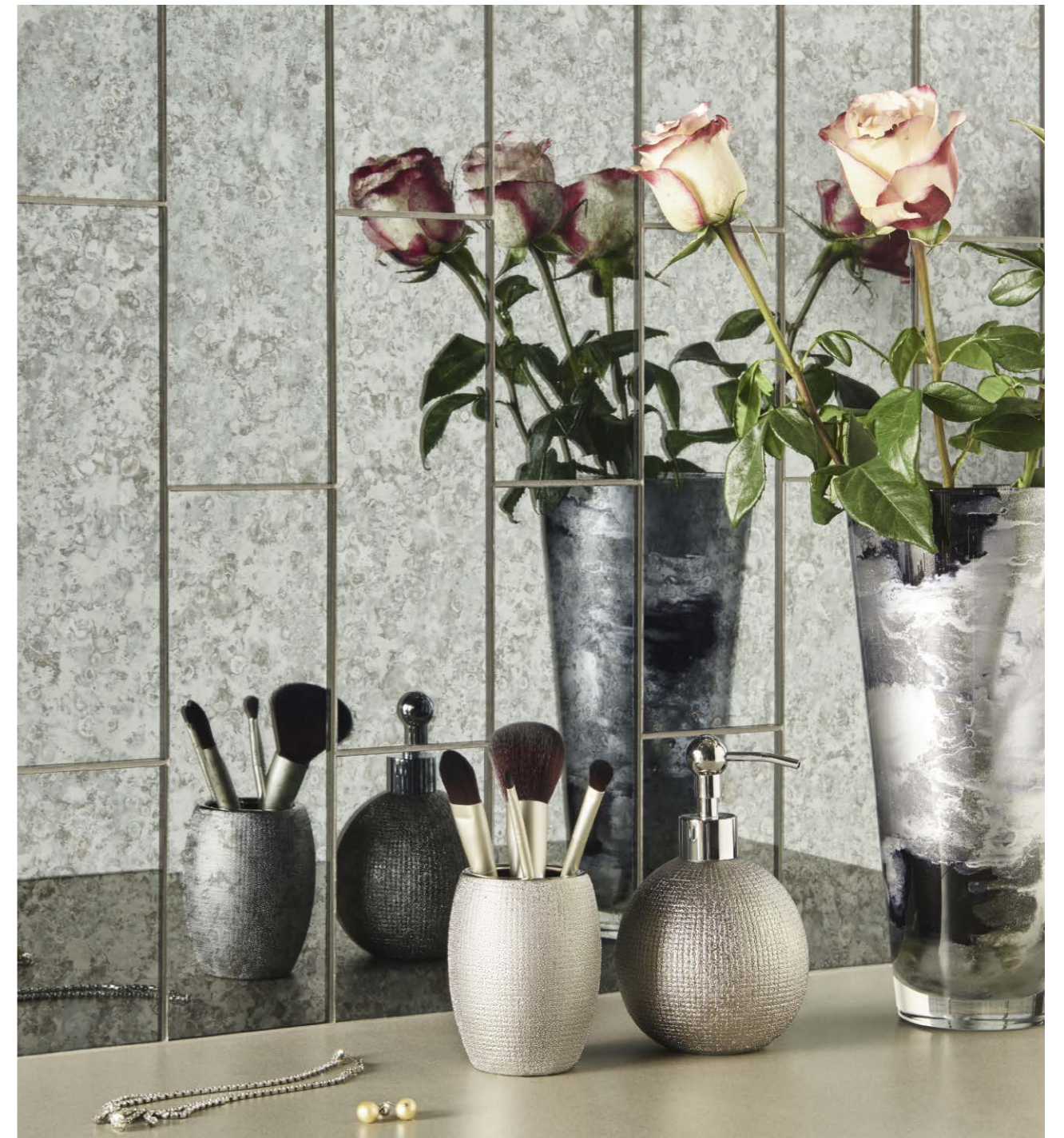
GW-ANTWH6030C  
600 x 300 x 6mm  
11<sup>3</sup>/<sub>16</sub>" x 23<sup>3</sup>/<sub>8</sub>" x 1<sup>1</sup>/<sub>4</sub>"



GW-ANTWHMMOS  
310 x 310 x 5mm  
12<sup>3</sup>/<sub>16</sub>" x 12<sup>3</sup>/<sub>16</sub>" x 1<sup>1</sup>/<sub>4</sub>"  
50mm / 2" Pieces



Antique Mirror White Bevelled GW-ANTWH2008B

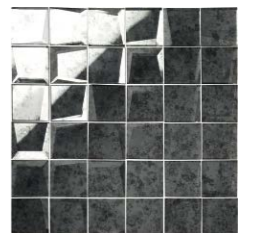


Antique Mirror Grey GW-ANTGR3010

mirror  
Antique Mirror Grey



GW-ANTGR3010  
300 x 100 x 6mm  
4" x 11<sup>3</sup>/<sub>4</sub>" x 1<sup>1</sup>/<sub>4</sub>"



GW-ANTGRMMOS  
310 x 310 x 5mm  
12<sup>3</sup>/<sub>16</sub>" x 12<sup>3</sup>/<sub>16</sub>" x 1<sup>1</sup>/<sub>4</sub>"  
50mm / 2" Pieces



mirror  
Antique Mirror  
Bevelled



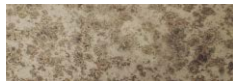
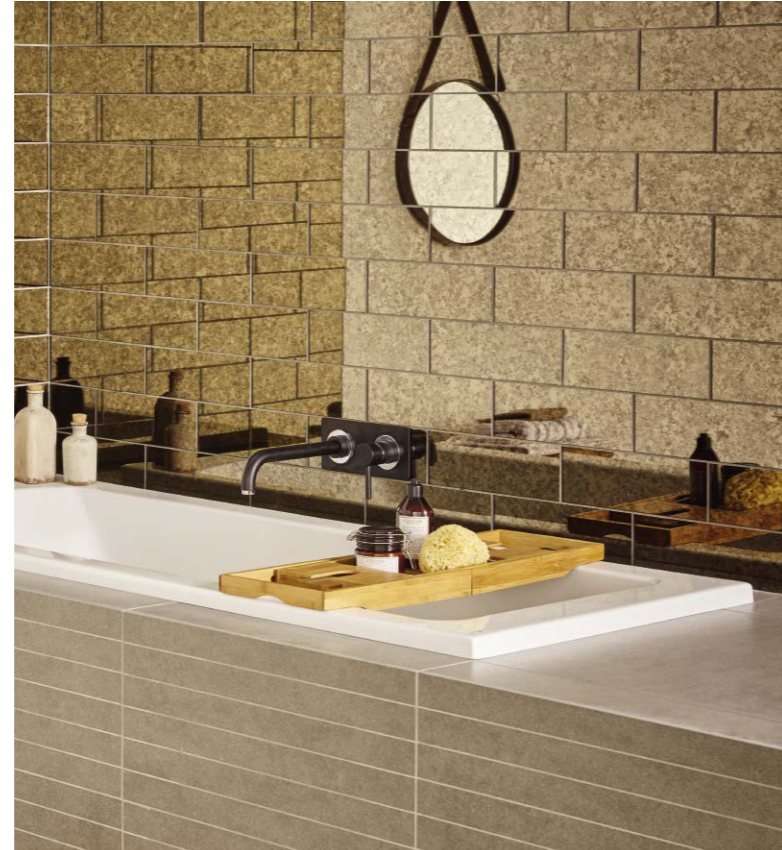
GW-ANT1010B  
100 x 100 x 8mm / 4" x 4" x 5/16"



GW-ANT2010B  
200 x 100 x 8mm / 4" x 8" x 5/16"

Antique Mirror Bevelled GW-ANT2010B

mirror  
Antique Mirror  
Copper



GW-ANTCP3010  
300 x 100 x 6mm / 4" x 11 3/4" x 1/4"



GW-ANTCP6030C  
600 x 300 x 6mm  
11 3/4" x 23 5/8" x 1/4"

Antique Mirror Copper GW-ANTCP3010

mirror  
Silver Mirror



GW-SMR1010B  
100 x 100 x 8mm  
4" x 4" x 5/16"



GW-SMR2010B  
200 x 100 x 8mm  
4" x 8" x 5/16"



GW-SMRMMOS  
310 x 310 x 5mm  
12 3/16" x 12 3/16" x 1/4"  
50mm / 2" Pieces



Silver Mirror Bevelled GW-SMR2010B & GW-SMR1010B



## glass bricks

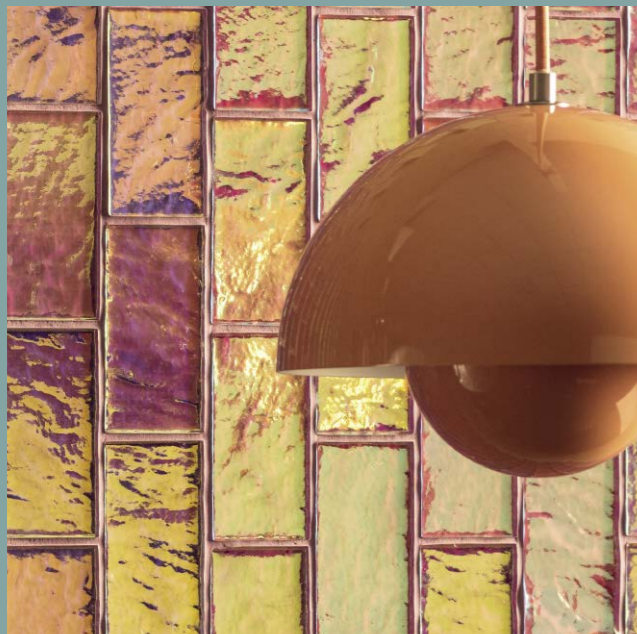


Brick tiles are always on trend and our latest collection offers a fresh approach to the format. Here we showcase individual tiles and mosaics that have been created using a variety of innovative methods – for striking results

In this section:

- siva / arabia / ammon** – burnished metallic hues and bold textures
- radiance clear & frosted** – magical colour-shifting tiles and mosaics in two distinctive finishes
- eclipse** – opulent metallic hues under a distorted and diffused glass layer
- atmosphere** – exquisite marbled glass, layered over a shimmering metallic base

Opposite: Radiance Silver Frost Mosaic GW-RSVBBMOSF  
Above: Atmosphere Ocean GW-OCE2276



### Light fantastic

Choose from a palette of the brightest metallics, shifting hues and intense colours to the softest pastel shades

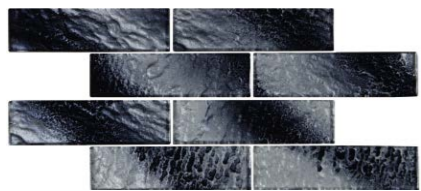
Shown here: Radiance Pearl Frosted GW-RPR2008F & Radiance Pink Frosted GW-RPK2008F

Top Left: Radiance Pink Gloss Mosaic GW-RPKBBMOSG Top Right: Eclipse Almathea GW-AML2276S  
Above: Radiance Eclipse Dione GW-DIN2276S





textured bricks  
Siva Mosaic



Detail

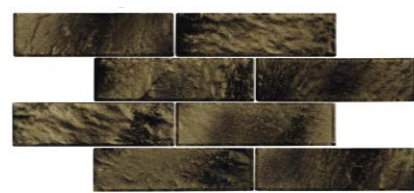
GW-SIVMOS  
402 x 205 x 8mm (8 1/16" x 15 13/16" x 5/16")



SIVA / ARABIA / AMMON  
These mosaics are painted by hand and so each individual tile will be unique.  
Ces mosaïques sont peints à la main ; de ce fait chaque carreau sera unique.  
Die Rückseiten dieser Mosaik sind handbemalt und jede Fliese ist einzigartig.  
Doordat de achterkant van deze glazen mozaïeken met de hand geschilderd zijn, is iedere tegel uniek.  
Обратная сторона этой плитки раскрашена вручную и поэтому каждая индивидуальная плитка уникальна.

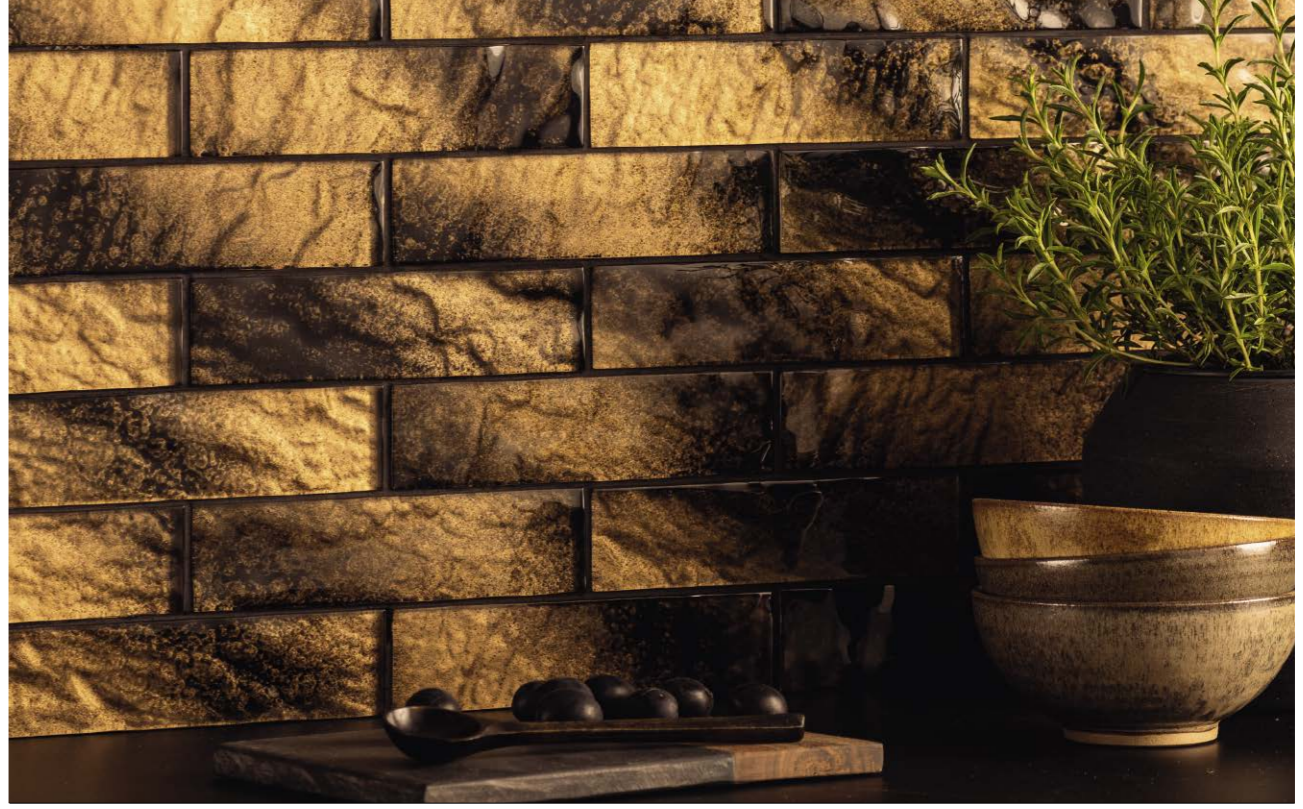
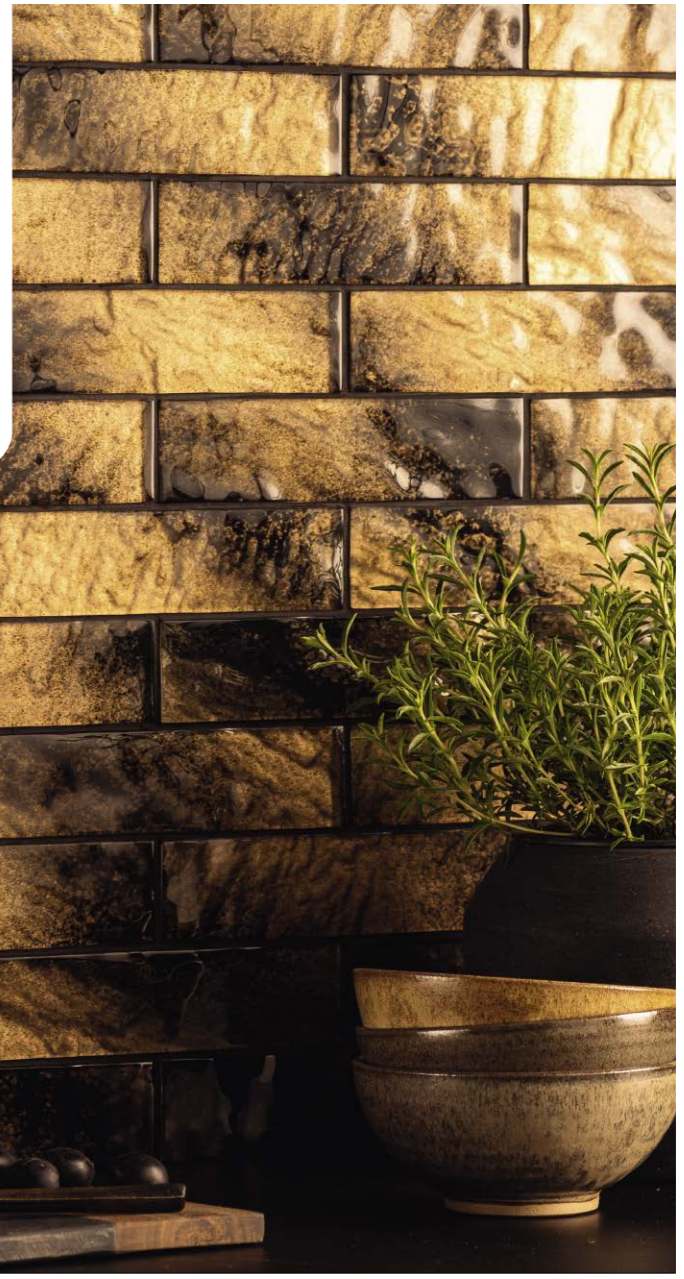


textured bricks  
Arabia Mosaic

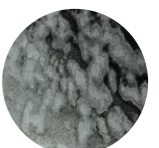
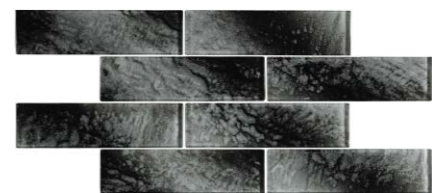


Detail

GW-ABAMOS  
402 x 205 x 8mm (8 1/16" x 15 13/16" x 5/16")



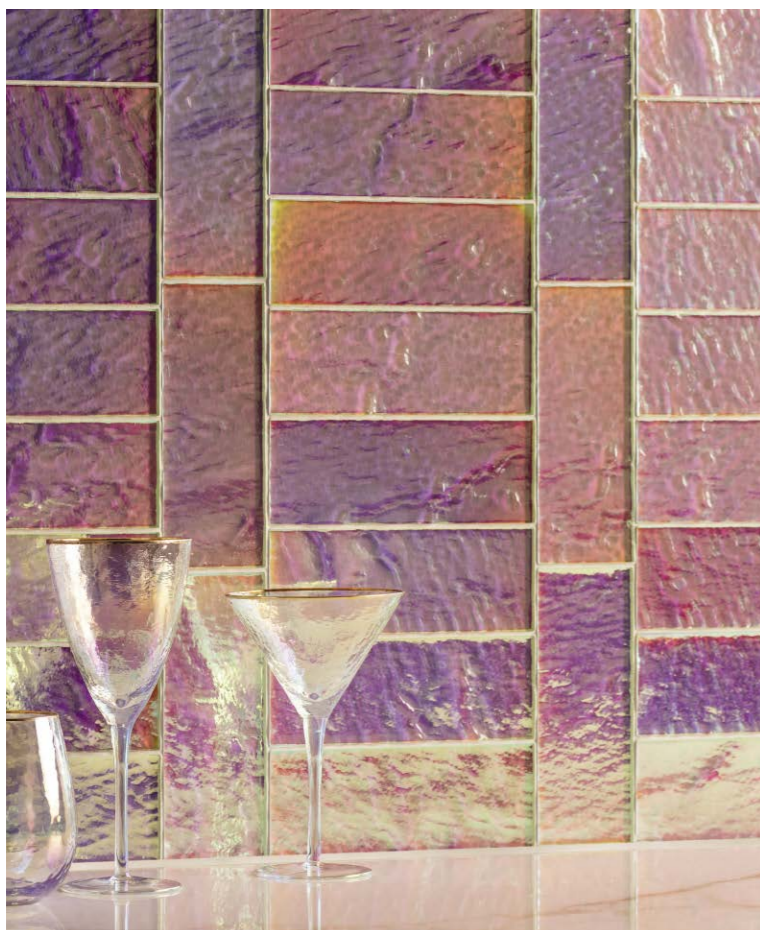
textured bricks  
Ammon Mosaic



Detail

GW-AMMMOS  
402 x 205 x 8mm (8 1/16" x 15 13/16" x 5/16")



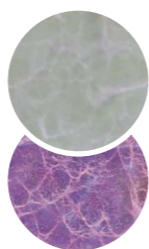


Pearl Gloss Brick GW-RPR2008G

radiance  
Pearl Gloss



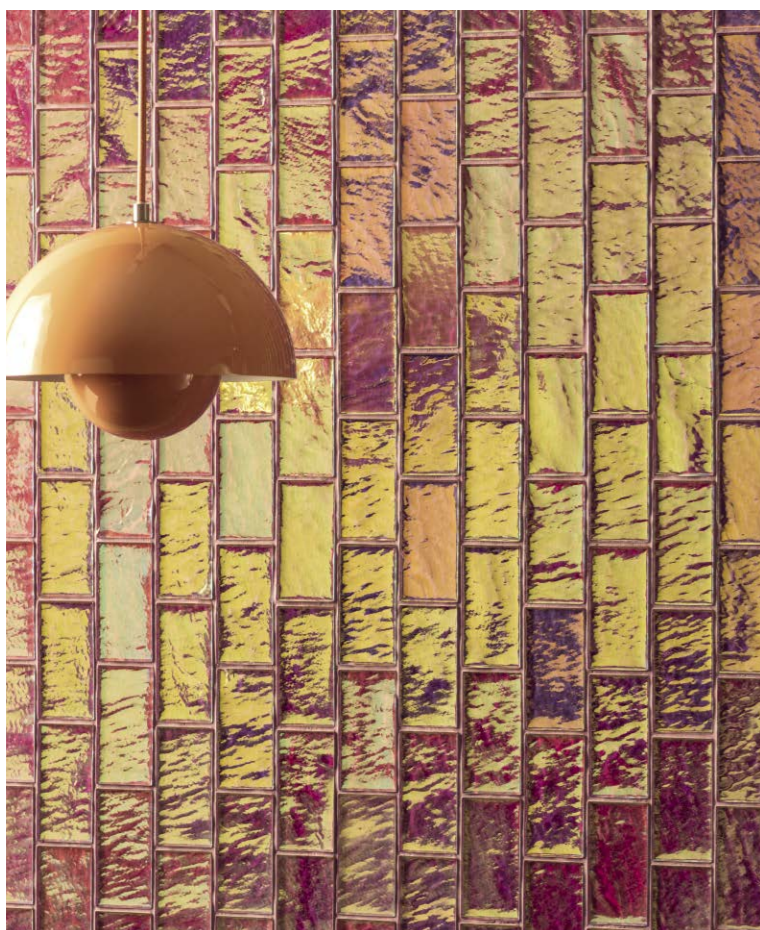
Pearl Gloss Brick GW-RPR2008G  
200 x 75 x 8mm (3" x 7 7/8" x 5/16")



Detail  
(varies with lighting  
conditions and  
viewing angle)



Pearl Gloss Mosaic GW-RPRBBMOSG  
315 x 305 x 8mm (12" x 12 3/8" x 5/16")

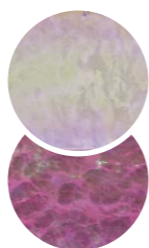


Pink Gloss Mosaic GW-RPKBBMOSG

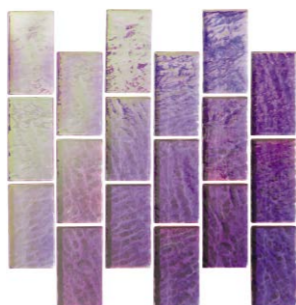
radiance  
Pink Gloss



Pink Gloss Mosaic GW-RPK2008G  
200 x 75 x 8mm (3" x 7 7/8" x 5/16")



Detail  
(varies with lighting  
conditions and  
viewing angle)



Pink Gloss Mosaic GW-RPKBBMOSG  
315 x 305 x 8mm (12" x 12 3/8" x 5/16")



Silver Gloss Mosaic GW-RSVBBMOSG

radiance  
Silver Gloss



Silver Gloss Brick GW-RSV2008G  
200 x 75 x 8mm (3" x 7 7/8" x 5/16")



Detail  
(varies with lighting  
conditions and  
viewing angle)



Silver Gloss Mosaic GW-RSVBBMOSG  
315 x 305 x 8mm (12" x 12 3/8" x 5/16")

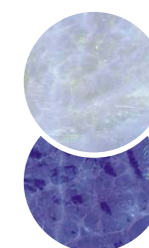


Blue Gloss Brick GW-RBL2008G

radiance  
Blue Gloss



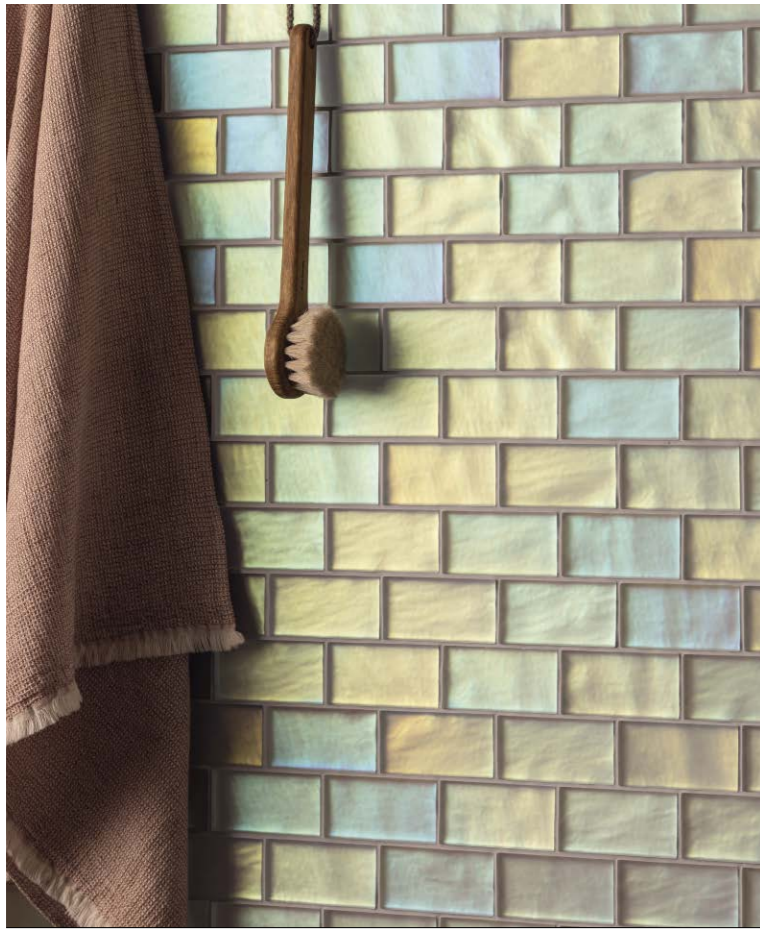
Blue Gloss Brick GW-RBL2008G  
200 x 75 x 8mm (3" x 7 7/8" x 5/16")



Detail  
(varies with lighting  
conditions and  
viewing angle)



Blue Gloss Mosaic GW-RBLBBMOSG  
315 x 305 x 8mm (12" x 12 3/8" x 5/16")



Pearl Frost Mosaic GW-RPRBBMOSF

radiance  
Pearl Frost



Pearl Frost Brick GW-RPR2008F  
200 x 75 x 8mm (3" x 7 7/8" x 5/16")



Detail  
(varies with lighting  
conditions and  
viewing angle)



Pearl Frost Mosaic GW-RPRBBMOSF  
315 x 305 x 8mm (12" x 12 3/8" x 5/16")



Pink Frost Brick GW-RPK2008F

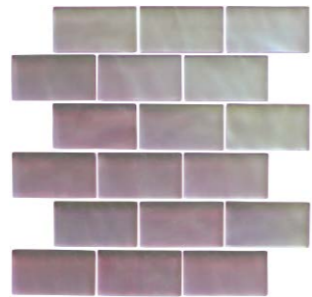
radiance  
Pink Frost



Pink Frost Brick GW-RPK2008F  
200 x 75 x 8mm (3" x 7 7/8" x 5/16")



Detail  
(varies with lighting  
conditions and  
viewing angle)



Pink Frost Mosaic GW-RPKBBMOSF  
315 x 305 x 8mm (12" x 12 3/8" x 5/16")



Silver Frost Mosaic GW-RSVBBMOSF

radiance  
Silver Frost



Silver Frost Brick GW-RSV2008F  
200 x 75 x 8mm (3" x 7 7/8" x 5/16")



Detail  
(varies with lighting  
conditions and  
viewing angle)



Silver Frost Mosaic GW-RSVBBMOSF  
315 x 305 x 8mm (12" x 12 3/8" x 5/16")



Blue Frost Brick GW-RBL2008F

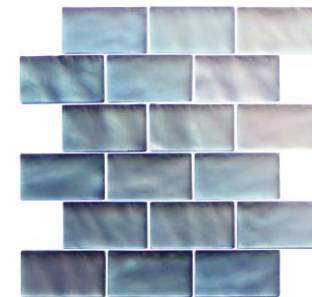
radiance  
Blue Frost



Blue Frost Brick GW-RBL2008F  
200 x 75 x 8mm (3" x 7 7/8" x 5/16")



Detail  
(varies with lighting  
conditions and  
viewing angle)



Blue Frost Mosaic GW-RBLBBMOSF  
315 x 305 x 8mm (12" x 12 3/8" x 5/16")



eclipse  
Elara

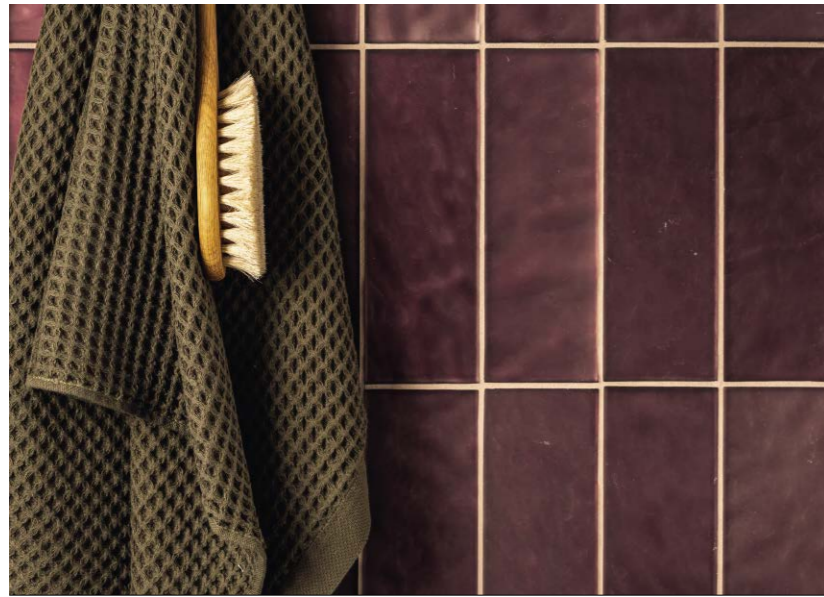


GW-ELA2276S  
220 x 76 x 8mm (3" x 8<sup>5</sup>/<sub>8</sub>" x <sup>5</sup>/<sub>16</sub>" )

eclipse  
Amalthea



GW-AML2276S  
220 x 76 x 8mm (3" x 8<sup>5</sup>/<sub>8</sub>" x <sup>5</sup>/<sub>16</sub>" )



eclipse  
Arche



GW-ACH2276S  
220 x 76 x 8mm (3" x 8<sup>5</sup>/<sub>8</sub>" x <sup>5</sup>/<sub>16</sub>" )

eclipse  
Janus



GW-JAN2276S  
220 x 76 x 8mm (3" x 8<sup>5</sup>/<sub>8</sub>" x <sup>5</sup>/<sub>16</sub>" )



eclipse  
Dionne



GW-DIN2276S  
220 x 76 x 8mm (3" x 8<sup>5</sup>/<sub>8</sub>" x <sup>5</sup>/<sub>16</sub>" )

eclipse  
Helene



GW-HLN2276S  
220 x 76 x 8mm (3" x 8<sup>5</sup>/<sub>8</sub>" x <sup>5</sup>/<sub>16</sub>" )





atmosphere  
Storm new



Detail

GW-STR2276  
220 x 76 x 8mm (3" x 8 5/8" x 5/16")



atmosphere  
Sky new

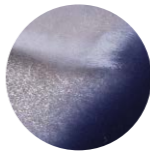


Detail

GW-SKY2276  
220 x 76 x 8mm (3" x 8 5/8" x 5/16")



atmosphere  
Ocean new



Detail

GW-OCE2276  
220 x 76 x 8mm (3" x 8 5/8" x 5/16")





## metallic & sparkle

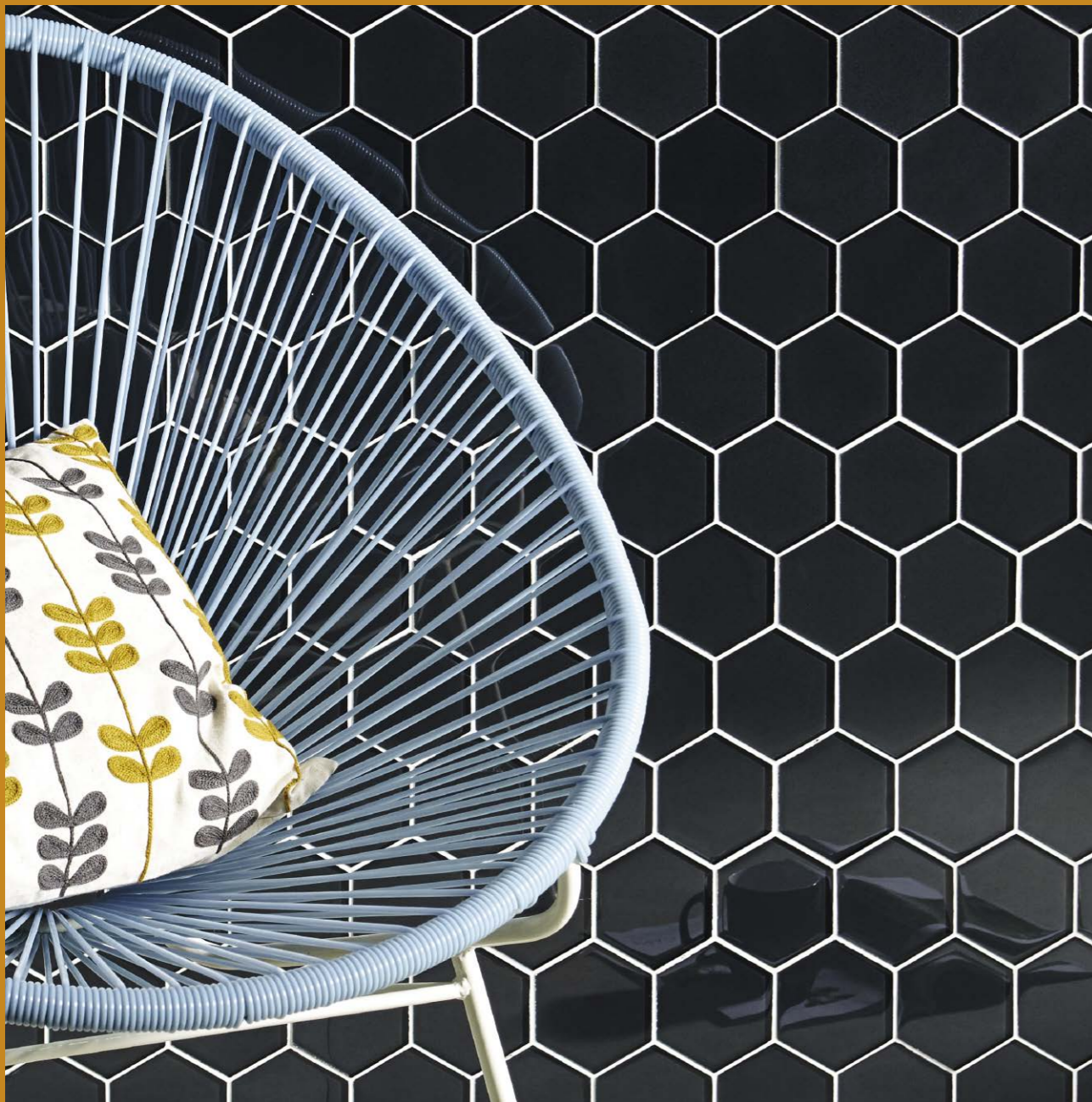


More subdued than the previous section, our metallic & sparkling collection offers subtle metallic tones and shimmering lustres, for a touch of serene glamour

In this section:

- metallic effect** – smart, finely grained metallics
- metallica** – textured but still subtle metallics
- constellation** – glamorous, glitter effects
- sparkle effect** – with twinkling specks of colour
- futura** – space age metallic octagons

Opposite: Futura Zirconia Hexagon Mosaic GW-FZHMOS  
Above: Constellation Delphinus GW-DLP3010C



## Shine on

Our metallics look great anywhere but work particularly well in bathrooms and kitchens, where they reflect light and create a clean and fresh ambiance.



Top: Metallic Effect Hera Hexagon Mosaic GW-HERHEXMOS  
Above Left: Constellation Hydrus GW-HYD3010C / Above Right: Metallic Effect Ulysses Bevel GW-ULY2010B

Shown here: Metallic Effect Erebos GW-ERB1575CM

metallic effect  
Solinda



GW-SONMFMOS  
295 x 298 x 8mm / 11<sup>5</sup>/<sub>16</sub>" x 11<sup>3</sup>/<sub>4</sub>" x <sup>5</sup>/<sub>16</sub>"



GW-SONHEXMOS  
\*280 x 289 x 8mm / 11" x 11<sup>3</sup>/<sub>8</sub>" x <sup>5</sup>/<sub>16</sub>"



Detail



GW-SONMOS  
402 x 205 x 6mm / 8<sup>1</sup>/<sub>16</sub>" x 15<sup>1</sup>/<sub>16</sub>" x <sup>1</sup>/<sub>4</sub>"



GW-SON1575CM  
152 x 75 x 6mm  
3" x 6" x <sup>1</sup>/<sub>4</sub>"



Solinda Hexagon Mosaic GW-SONHEXMOS

metallic effect  
Dionysus



GW-DIO3010C  
300 x 100 x 6mm  
4" x 11<sup>3</sup>/<sub>4</sub>" x <sup>1</sup>/<sub>4</sub>"



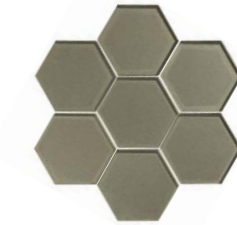
GW-DIO1010B  
100 x 100 x 10mm  
4" x 4" x <sup>3</sup>/<sub>8</sub>"



GW-DIO2010B  
200 x 100 x 10mm  
4" x 8" x <sup>3</sup>/<sub>8</sub>"



Detail



GW-DIOHEXMOS  
\*280 x 289 x 8mm / 11" x 11<sup>3</sup>/<sub>8</sub>" x <sup>5</sup>/<sub>16</sub>"



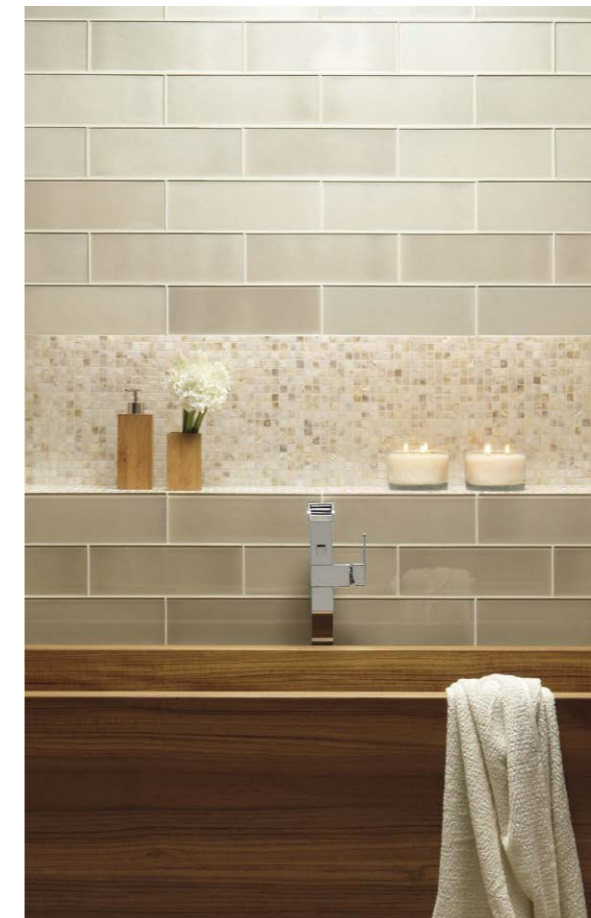
GW-DIO1575CM  
150 x 75 x 6  
6" x 6" x <sup>3</sup>/<sub>16</sub>"



GW-DIO6030C  
600 x 300 x 6mm  
11<sup>1</sup>/<sub>16</sub>" x 23<sup>3</sup>/<sub>8</sub>" x <sup>1</sup>/<sub>4</sub>"



GW-DIOMOS  
402 x 205 x 6mm / 8<sup>1</sup>/<sub>16</sub>" x 15<sup>1</sup>/<sub>16</sub>" x <sup>1</sup>/<sub>4</sub>"



Dionysus GW-DIO3010C

metallic effect  
Starcia



GW-SCIMFMOS  
295 x 298 x 8mm / 11<sup>5</sup>/<sub>16</sub>" x 11<sup>3</sup>/<sub>4</sub>" x <sup>5</sup>/<sub>16</sub>"



GW-SCIMOS  
402 x 205 x 6mm / 8<sup>1</sup>/<sub>16</sub>" x 15<sup>1</sup>/<sub>16</sub>" x <sup>1</sup>/<sub>4</sub>"



Detail



GW-SCI1575CM  
152 x 75 x 6mm  
3" x 6" x <sup>1</sup>/<sub>4</sub>"



Starcia GW-SCI1575CM

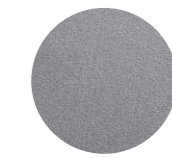
metallic effect  
Erebos



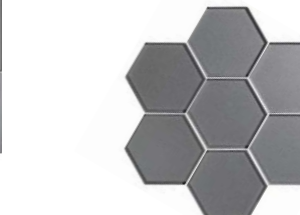
GW-ERBMFMOS  
295 x 298 x 8mm / 11<sup>5</sup>/<sub>16</sub>" x 11<sup>3</sup>/<sub>4</sub>" x <sup>5</sup>/<sub>16</sub>"



GW-ERB1575CM  
152 x 75 x 6mm  
3" x 6" x <sup>1</sup>/<sub>4</sub>"



Detail



GW-ERBHEXMOS  
\*280 x 289 x 8mm / 11" x 11<sup>3</sup>/<sub>8</sub>" x <sup>5</sup>/<sub>16</sub>"



GW-ERBMOS  
402 x 205 x 6mm / 8<sup>1</sup>/<sub>16</sub>" x 15<sup>1</sup>/<sub>16</sub>" x <sup>1</sup>/<sub>4</sub>"



Erebos GW-ERB1575CM

\* Please see page 76  
\* Merci de regarder la page 76  
\* Bitte sehen Sie hierzu auch Seite 76  
\* Kijk alstublieft op bladzijde 76  
\* См. Страницу 76

\* Please see page 76  
\* Merci de regarder la page 76  
\* Bitte sehen Sie hierzu auch Seite 76  
\* Kijk alstublieft op bladzijde 76  
\* См. Страницу 76





Hera GW-HERHEXMOS

metallic effect  
Hera



GW-HERHEXMOS  
\* 280 x 289 x 8mm 11" x 11 3/8" x 5/16"



GW-HERMOS  
402 x 205 x 6mm / 8 1/16" x 15 1/16" x 1/4"



GW-HER1575CM  
152 x 75 x 6mm  
3" x 6" x 1/4"



Detail



\* Please see page 76  
\* Merci de regarder la page 76  
\* Bitte sehen Sie hierzu auch Seite 76  
\* Kijk alstublieft op bladzijde 76  
\* См. Страницу 76



Ulysses GW-ULY2010B

metallic effect Ulysses



GW-ULY1010B  
100 x 100 x 10mm / 4" x 4" x 3/8"



GW-ULY2010B  
200 x 100 x 10mm / 4" x 8" x 3/8"



GW-ULY3010C  
300 x 100 x 6mm / 4" x 11 3/4" x 1/4"



Detail



Hypnos GW-HPSMOS

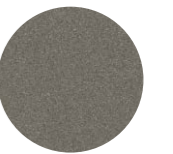
metallic effect Hypnos



GW-HPS1575CM  
152 x 75 x 6mm / 3" x 6" x 1/4"



GW-HPSMOS  
402 x 205 x 6mm / 8 1/16" x 15 1/16" x 1/4"



Detail



metallic effect  
Mira



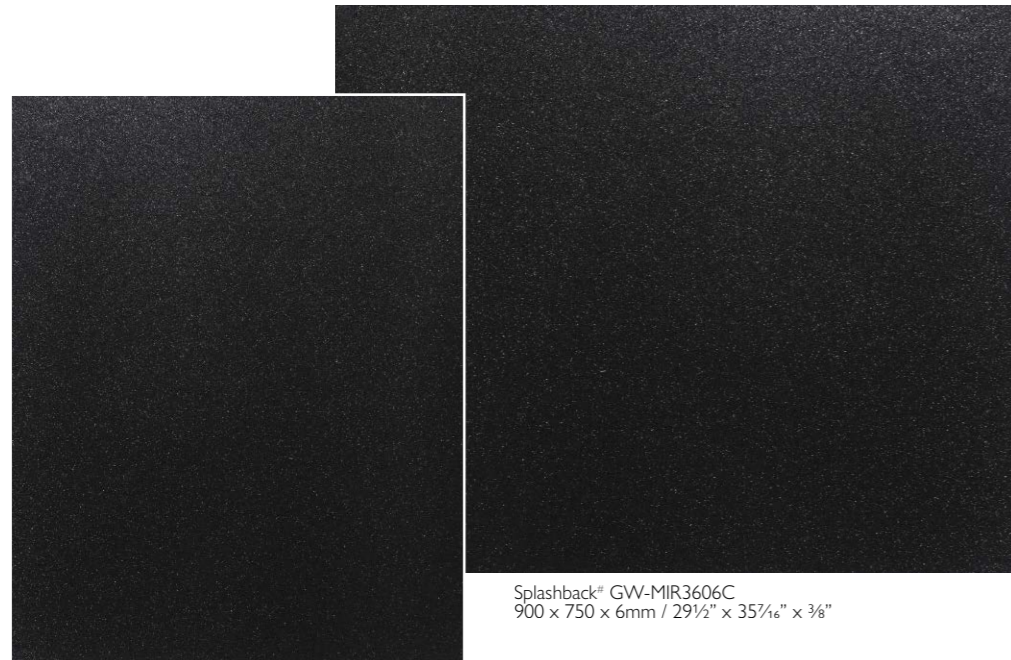
GW-MIR1010B  
100 x 100 x 10mm  
4" x 4" x 3/8"



GW-MIR2010B  
200 x 100 x 10mm  
4" x 8" x 3/8"



GW-MIR3010C  
300 x 100 x 6mm  
4" x 11 3/4" x 1/4"



Splashback® GW-MIR2406C  
600 x 750 x 6mm / 23 3/8" x 29 1/2" x 3/8"

Splashback® GW-MIR3606C  
900 x 750 x 6mm / 29 1/2" x 35 7/8" x 3/8"



GW-MIR6030C  
600 x 300 x 6mm  
11 3/8" x 23 3/8" x 1/4"



Mira Bevelled GW-MIR2010B

# Please see pages 77-79 for important information on Splashbacks.  
# Merci de regarder les pages 77-79 pour des informations importantes concernant les « Splashbacks »  
# Bitte beachten Sie weitere wichtige Informationen zu Splashbacks auf den Seiten 77-79.  
# Kijk alstublieft op bladzijde 77-79 voor de belangrijke informatie over Splashbacks.  
# Пожалуйста, см. Страницы 77-79 для получения важной информации о Splashbacks.



Zinc Splashback GW-ZIN2406C

metallic effect  
Zinc



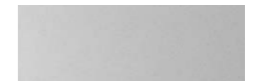
GW-ZIN1575CM  
152 x 75 x 6mm  
3" x 6" x 1/4"



GW-ZIN1010B  
100 x 100 x 10mm  
4" x 4" x 3/8"



GW-ZIN2010B  
200 x 100 x 10mm  
4" x 8" x 3/8"



GW-ZIN3010C  
300 x 100 x 6mm  
4" x 11 3/4" x 1/4"



Splashback® GW-ZIN2406C  
600 x 750 x 6mm / 23 3/8" x 29 1/2" x 3/8"

Splashback® GW-ZIN3606C  
900 x 750 x 6mm / 29 1/2" x 35 7/8" x 3/8"



GW-ZIN6030C  
600 x 300 x 6mm  
11 3/8" x 23 3/8" x 1/4"



# Please see pages 77-79 for important information on Splashbacks.  
# Merci de regarder les pages 77-79 pour des informations importantes concernant les « Splashbacks »  
# Bitte beachten Sie weitere wichtige Informationen zu Splashbacks auf den Seiten 77-79.  
# Kijk alstublieft op bladzijde 77-79 voor de belangrijke informatie over Splashbacks.  
# Пожалуйста, см. Страницы 77-79 для получения важной информации о Splashbacks.

metallica  
Triton



Detail



GW-TRT410MFT  
100 x 100 x 10mm / 4" x 4" x 3/8"



GW-TRT3010C  
300 x 100 x 6mm / 4" x 11 3/4" x 1/4"



Triton GW-TRT410MFT

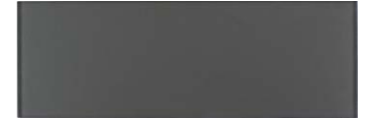
metallica  
Hermes



Detail



GW-HRM410MFT  
100 x 100 x 10mm / 4" x 4" x 3/8"



GW-HRM3010C  
300 x 100 x 6mm / 4" x 11 3/4" x 1/4"



Hermes GW-HRM3010C

metallica  
Galatea



Detail



GW-GLT410MFT  
100 x 100 x 10mm / 4" x 4" x 3/8"



GW-GLT3010C  
300 x 100 x 6mm / 4" x 11 3/4" x 1/4"



Galatea GW-GLT3010C

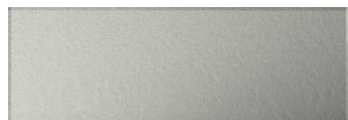
metallica  
Proteus



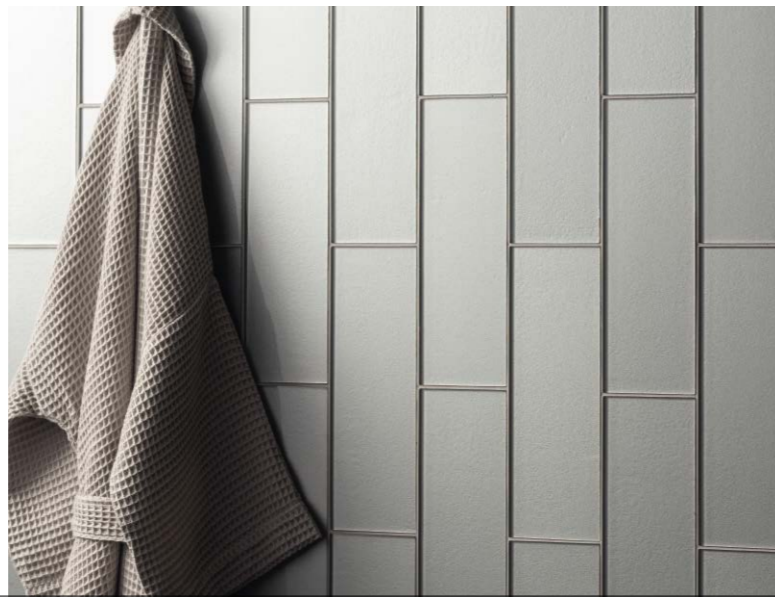
Detail



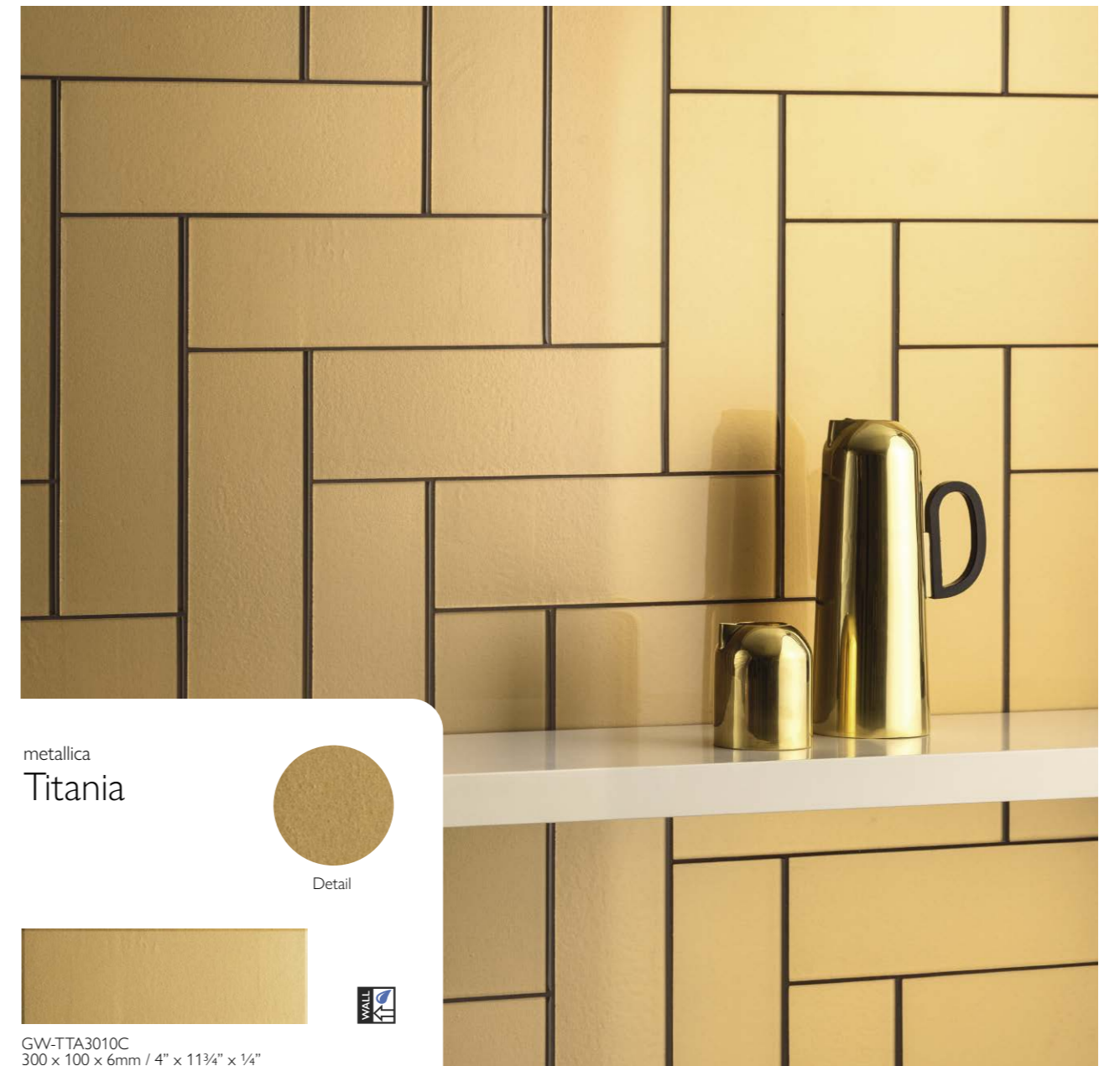
GW-PRO410MFT  
100 x 100 x 10mm / 4" x 4" x 3/8"



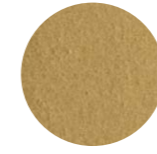
GW-PRO3010C  
300 x 100 x 6mm / 4" x 11 3/4" x 1/4"



Proteus GW-PRO3010C



metallica  
Titania



Detail

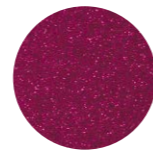


GW-TTA3010C  
300 x 100 x 6mm / 4" x 11 3/4" x 1/4"





constellation  
Andia



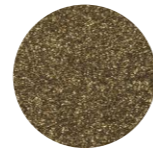
Detail



GW-ADA410MF  
100 x 100 x 10mm / 4" x 4" x 3/8"



constellation  
Delphinus



Detail



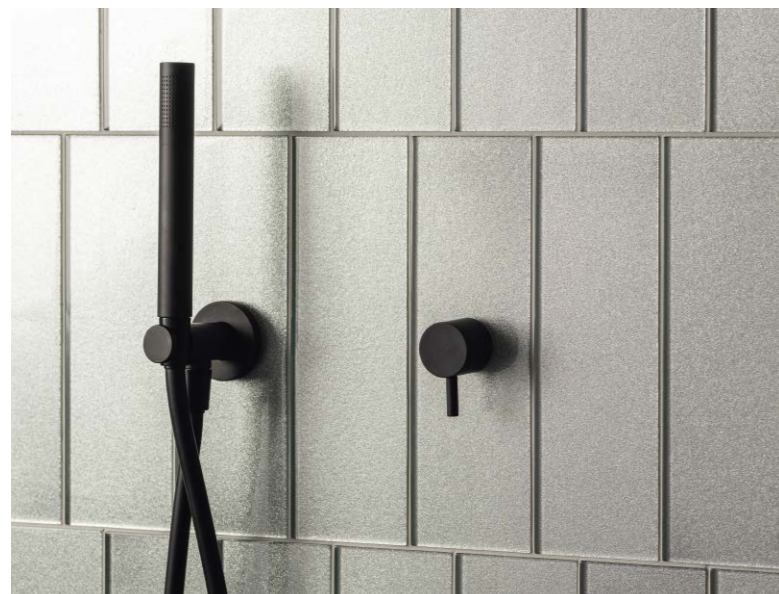
GW-DLP410MF  
100 x 100 x 10mm / 4" x 4" x 3/8"



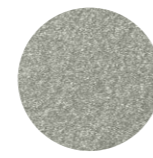
GW-DLP3010C  
300 x 100 x 6mm / 4" x 11 3/4" x 1/4"



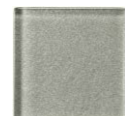
Dionysus GW-DLP3010C



constellation  
Hydrus



Detail



GW-HYD410MF  
100 x 100 x 10mm / 4" x 4" x 3/8"

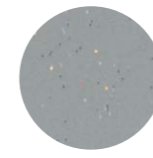


GW-HYD3010C  
300 x 100 x 6mm / 4" x 11 3/4" x 1/4"



Hydrus GW-HYD3010C

sparkle effect  
Argent



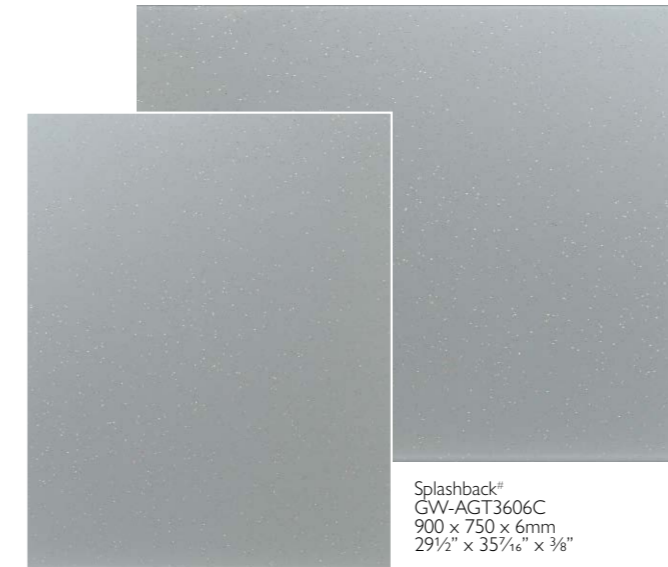
Detail



GW-AGT3010C  
300 x 100 x 6mm  
4" x 11 3/4" x 1/4"



GW-AGT6030C  
600 x 300 x 6mm / 11 1/4" x 23 3/8" x 1/4"



Splashback® GW-AGT2406C  
600 x 750 x 6mm / 23 3/8" x 29 1/2" x 3/8"



Argent GW-AGT2406C

sparkle effect  
Meteor



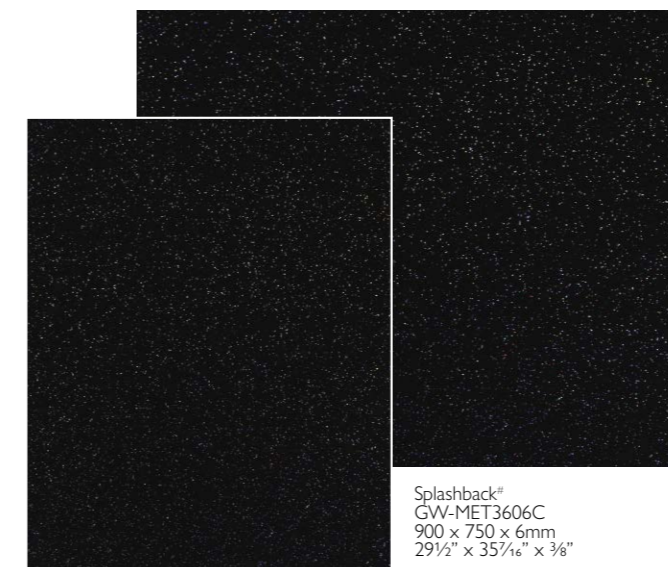
Detail



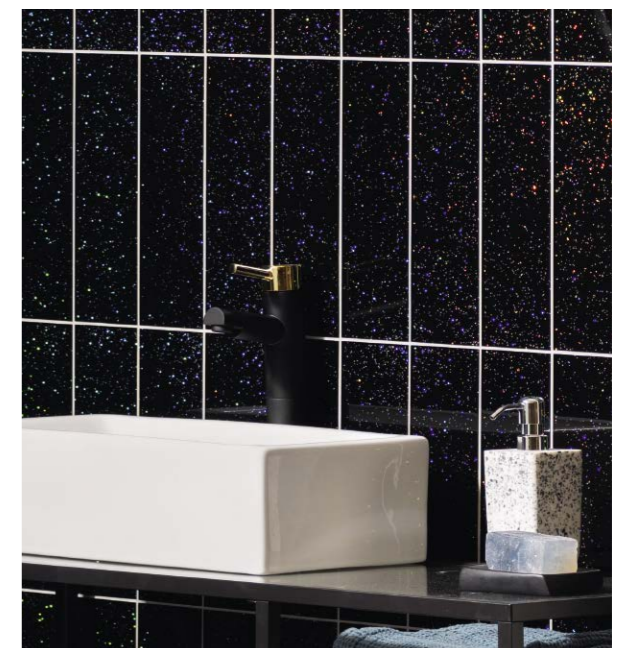
GW-MET3010C  
300 x 100 x 6mm  
4" x 11 3/4" x 1/4"



GW-MET6030C  
600 x 300 x 6mm / 11 1/4" x 23 3/8" x 1/4"



Splashback® GW-MET2406C  
600 x 750 x 6mm / 23 3/8" x 29 1/2" x 3/8"



Meteor GW-MET3010C

# Please see pages 77-79 for important information on Splashbacks.  
# Merci de regarder les pages 77-79 pour des informations importantes concernant les « Splashbacks »  
# Bitte beachten Sie weitere wichtige Informationen zu Splashbacks auf den Seiten 77-79.  
# Kijk alstublieft op bladzijde 77-79 voor de belangrijke informatie over Splashbacks.  
# Пожалуйста, см. Страницы 77-79 для получения важной информации о Splashbacks.

futura  
Dichroic Hexagon Mosaic



GW-FGHMOS  
\* 280 x 289 x 8mm 11" x 11 3/8" x 5/16"



futura  
Zirconia Hexagon Mosaic



GW-FZHMOS  
\* 280 x 289 x 8mm 11" x 11 3/8" x 5/16"



futura  
Sepia Hexagon Mosaic



GW-FSHMOS  
\* 280 x 289 x 8mm 11" x 11 3/8" x 5/16"



FUTURA  
These mosaics are painted by hand and so each individual tile will be unique. / Ces mosaïques sont peintes à la main ; de ce fait chaque carreau sera unique.  
Die Rückseiten dieser Mosaik sind handbemalt und jede Fliese ist einzigartig. / Doordat de achterkant van deze glazen mozaïeken met de hand geschilderd zijn, is iedere tegel uniek.  
Обратная сторона этой плитки раскрашена вручную и поэтому каждая индивидуальная плитка уникальна.

\* Please see page 76  
\* Merci de regarder la page 76  
\* Bitte sehen Sie hierzu auch Seite 76  
\* Kijk alstublieft op bladzijde 76  
\* См. Страницу 76



simply colour



Our classic range of plain coloured glass, perfect for creating contemporary spaces whilst adding a splash of colour. The clean lines and reflective surfaces of these tiles help to create a calming yet stylish scene.

See page 63 for shape information...

Opposite: Colorado GW-COR6030C  
Above: Zambezi GW-MSP1575C



## Find clarity

Liven up your living space with a glossy, reflective expanse of glass – whether you choose the clean brilliance of white, a restful aquatic hue or a vibrant pink or red.

Top: Loire GW-LOR6030C

Above Left: Arkansas GW-ARK3010C / Above Right: Yukon Bevel GW-YUK2010B

Shown here: Arctic Clear GW-ART3010C



Indus Splashback GW-IND2406C

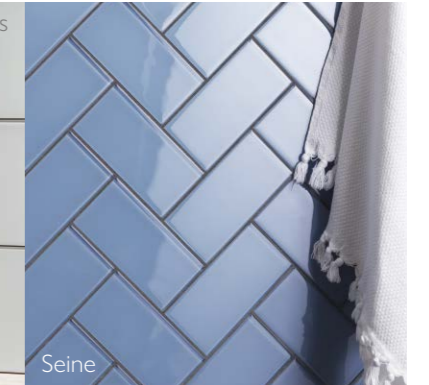


◁ **Simply square** the classic tile format. Use as shown, diagonally or brickbonded

## shape up

Here are some of the formats in this range.  
See page 74-75 for colour and shape availability.

▷ **Classic bricks** have a traditional ratio which will always look great in a simple brickbond or herringboned as shown. A range of sizes are available to change scale.



▷ **Long bricks** are available in several sizes. They look fresh and modern when horizontally stackbonded (shown far left - you can do this vertically too) or very dynamic in a horizontal herringbone design as shown.

▷ **Large tiles**  
The popular 600 x 300mm / 11<sup>3</sup>/<sub>16</sub>" x 23<sup>5</sup>/<sub>8</sub>" format is perfect for covering larger areas or when you want an expanse of reflective glass with fewer grout lines. The ratio of these tiles makes them suitable for stackbonding, brickbonding or for making a herringbone design.



▷ **Splashbacks<sup>#</sup>.** Our largest glass tiles. One-piece splashbacks are made from toughened glass and are a stylish and practical choice for behind a hob or sink, but can be used as a large format wall covering too.

<sup>#</sup> Please see pages 77-79 for important information on Splashbacks



▷ **Bevelled bricks.** The angled edges of this format show off the glass like no other tile. Light is refracted onto the coloured base creating highlights and shadows that shift and move as you do. Bevelled tiles look fabulous when brickbonded as shown.





Arctic Clear GW-ART3010C

simply colour  
Arctic



see the shapes available in this colour on pages 74-75



Arctic Clear



Arctic Frosted



Volga GW-VOL3010C & GW-VOL1636C

simply colour  
Volga



see the shapes available in this colour on pages 74-75



Volga Clear



Volga Frosted



Yukon GW-YUK2010B



simply colour  
Yukon



see the shapes available in this colour on  
pages 74-75



Arkansas GW-ARK3010C



simply colour  
Arkansas



see the shapes available in this colour on  
pages 74-75



Mohaka GW-MOH2010B



simply colour  
Mohaka



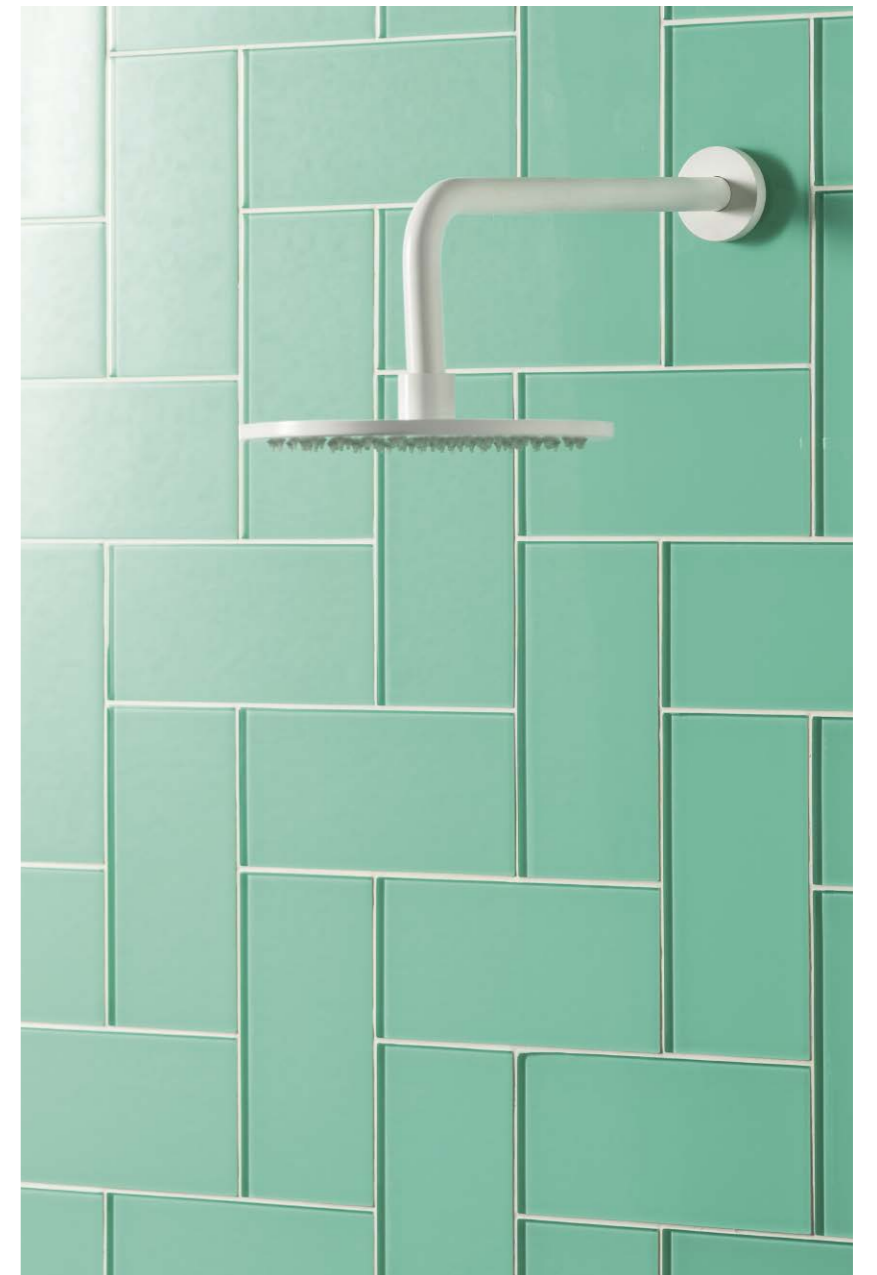
see the shapes available in this colour on  
pages 74-75



simply colour  
Mississippi



see the shapes available in this colour on  
pages 74-75



Mississippi GW-MSP846C

simply colour  
Colombia



see the shapes available in this colour on  
pages 74-75



Colombia GW-COL410C



simply colour  
Zambezi



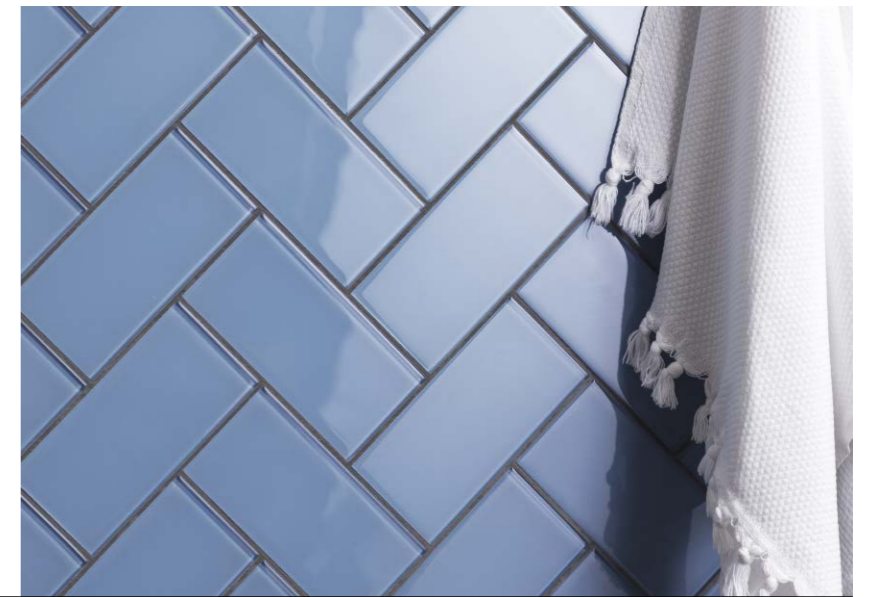
see the shapes available in this colour on  
pages 74-75

Zambezi GW-ZAM846C

simply colour  
Seine



see the shapes available in this colour on  
pages 74-75



Volga GW-VOL3010C & GW-VOL1636C



simply colour  
Colorado



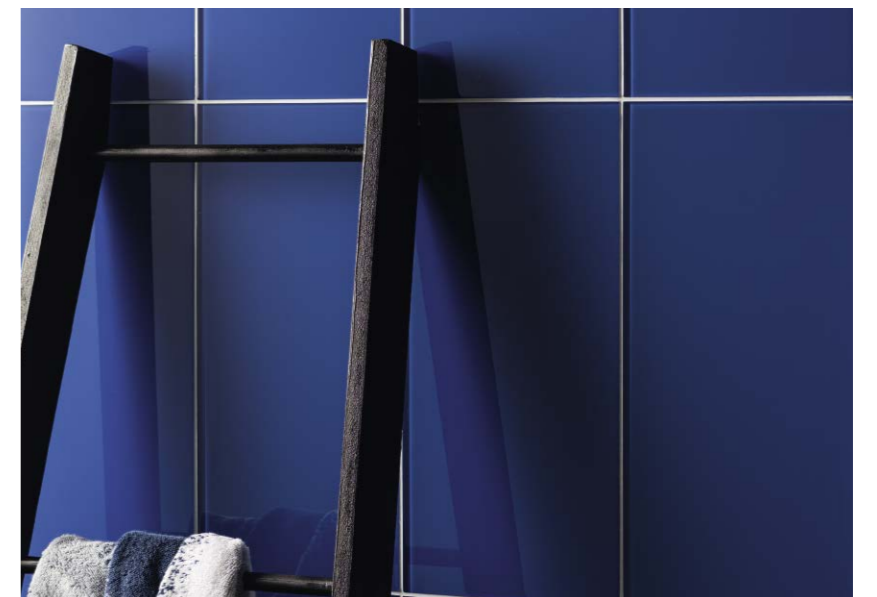
see the shapes available in this colour on  
pages 74-75

Colorado GW-COR3010C

simply colour  
Danube



see the shapes available in this colour on  
pages 74-75



Danube GW-DAN1606C



simply colour  
Loire



see the shapes available in this colour on  
pages 74-75

Loire GW-LOR6030C

simply colour  
Rhine



see the shapes available in this colour on  
pages 74-75



Rhine GW-RHN4010C



Thames GW-THA1606C



simply colour  
Thames



see the shapes available in this colour on pages 74-75



simply colour  
Indus



the format shown here is a colour sample only, see the shapes available on pages 74-75



Indus Splashback GW-IND2406C



Sala GW-SAA3010C



simply colour  
Sala



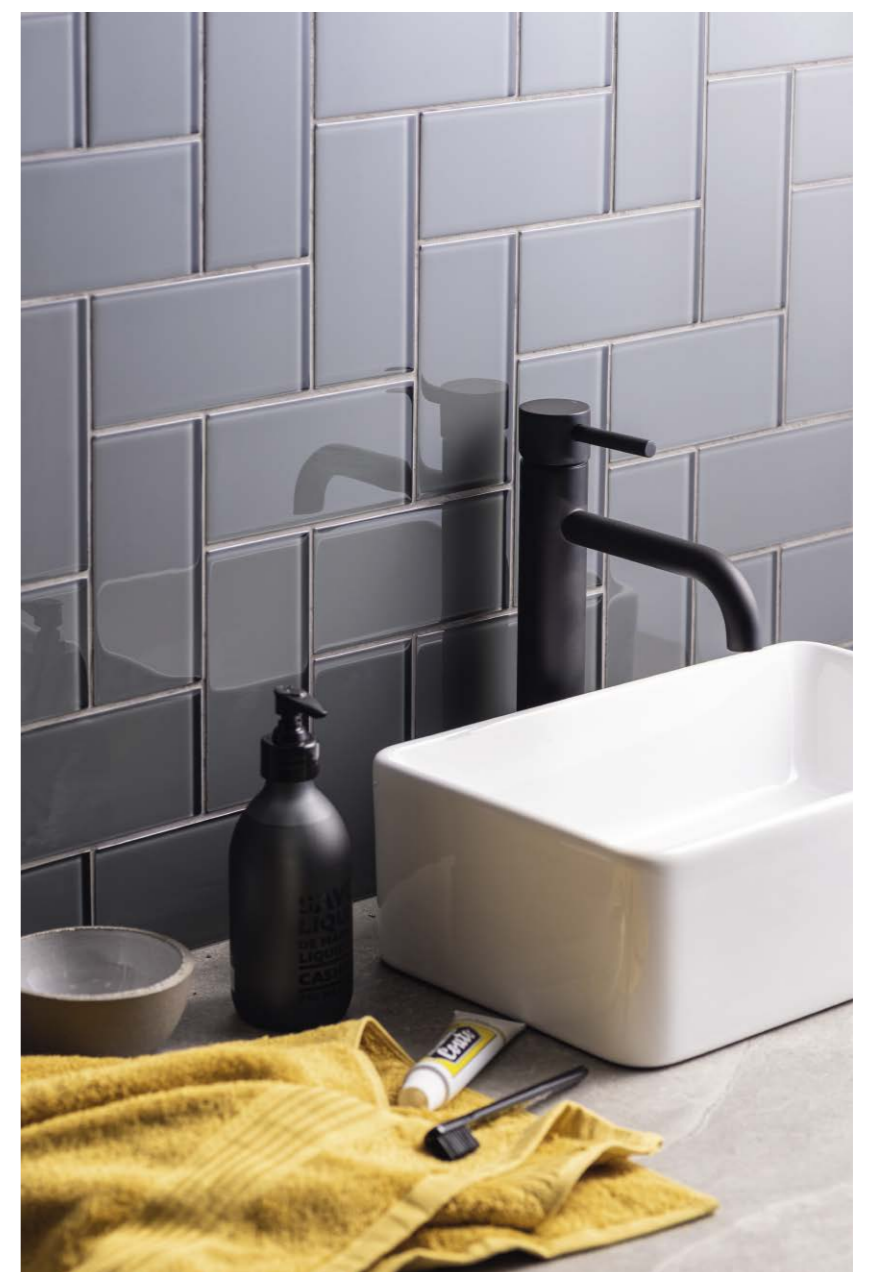
see the shapes available in this colour on pages 74-75



simply colour  
Avon



see the shapes available in this colour on pages 74-75



Avon GW-AVO1575CM



Mekong GW-MEK1636C



simply colour  
Mekong



see the shapes available in this colour on pages 74-75

simply colour  
Perfume



Perfume GW-PFM846C



see the shapes available in this colour on pages 74-75



Ebro Bevel GW-EBO2010B



simply colour  
Ebro



see the shapes available in this colour on pages 74-75

simply colour  
Mackenzie



Mackenzie GW-MAC3010C



see the shapes available in this colour on pages 74-75

# simply colour At a glance

all plain glass tile colours and formats in one place; use the product codes shown to order

Size (mm)	100 x 100 x 10	152 x 50 x 6	152 x 75 x 6	200 x 98 x 6	200 x 100 x 8mm Bevel	300 x 100 x 6		Size (mm)	298 x 23.5 x 8mm Highlight Strip	398 x 80 x 6mm	398 x 198 x 6mm	600 x 300 x 6mm	600 x 750 x 6mm Splashback	900 x 750 x 6mm Splashback	1000 x 140 x 6mm Upstand
Size (Inches)	4 x 4 x 3/8	2 x 6 x 1/4	3 x 6 x 1/2	4 x 8 x 1/4	4 x 8 x 3/16 Bevel	4 x 11 3/4 x 1/4		Size (Inches)	1 1/4 x 1 1/4 x 3/16 Highlight Strip	3 1/8 x 15 3/4 x 1/4	7 7/8 x 15 3/4 x 1/4	11 1/4 x 23 3/8 x 1/4	23 3/8 x 29 1/2 x 3/8 Splashback	29 1/2 x 35 7/16 x 3/8 Splashback	5 1/2 x 39 3/8 x 3/8 Upstand
Shape (not to scale)								Shape (not to scale)							
Clear Glass Colours:								Clear Glass Colours:							
Arctic	GW-ART410C	GW-ART656BC	GW-ART1575C	GW-ART846C	GW-ART2010B	GW-ART3010C		Arctic	GW-ARTLFB	GW-ART1636C	GW-ART1606C	GW-ART6030C	GW-ART2406C #	GW-ART3606C #	GW-ART10014C #
Volga	GW-VOL410C	-	GW-VOL1575C	GW-VOL846C	GW-VOL2010B	GW-VOL3010C		Volga	-	GW-VOL1636C	GW-VOL1606C	GW-VOL6030C	GW-VOL2406C #	GW-VOL3606C #	-
Yukon	GW-YUK410C	-	GW-YUK1575C	GW-YUK846C	GW-YUK2010B	GW-YUK3010C		Yukon	-	-	-	GW-YUK6030C	-	-	-
Columbia	GW-COL410C	-	GW-COL1575C	GW-COL846C	GW-COL2010B	GW-COL3010C		Columbia	-	-	-	GW-COL6030C	-	-	-
Mississippi	GW-MSP410C	-	GW-MSP1575C	GW-MSP846C	GW-MSP2010B	GW-MSP3010C		Mississippi	GW-MSPLFB	GW-MSP1636C	GW-MSP1606C	GW-MSP6030C	GW-MSP2406C #	-	-
Arkansas	GW-ARK410C	-	-	-	-	GW-ARK3010C		Arkansas	GW-ARKLFB	-	-	-	-	-	-
Mohaka	GW-MOH410C	-	GW-MOH1575C	GW-MOH846C	GW-MOH2010B	GW-MOH3010C		Mohaka	-	-	-	GW-MOH6030C	GW-MOH2406C #	-	-
Zambezi	GW-ZAM410C	-	-	GW-ZAM846C	GW-ZAM2010B	GW-ZAM3010C		Zambezi	-	-	-	GW-ZAM6030C	-	-	-
Colorado	GW-COR410C	-	GW-COR1575C	GW-COR846C	GW-COR2010B	GW-COR3010C		Colorado	-	-	GW-COR1606C	GW-COR6030C	-	-	-
Seine	GW-SEN410C	-	GW-SEN1575C	-	-	GW-SEN3010C		Seine	-	-	-	-	-	-	-
Loire	GW-LOR410C	-	GW-LOR1575C	-	GW-LOR2010B	GW-LOR3010C		Loire	-	-	-	GW-LOR6030	-	-	-
Danube	GW-DAN410C	-	-	-	-	GW-DAN3010C		Danube	GW-DANLFB	-	GW-DAN1606C	-	-	-	-
Rhine	GW-RHN410C	-	GW-RHN1575C	GW-RHN846C	-	GW-RHN3010C		Rhine	-	-	-	-	-	-	-
Ebro	GW-EBO410C	-	-	-	GW-EBO2010B	GW-EBO3010C		Ebro	-	-	-	-	-	-	-
Mekong	GW-MEK410C	-	GW-MEK1575C	GW-MEK846C	GW-MEK2010B	GW-MEK3010C		Mekong	-	GW-MEK1636C	GW-MEK1606C	GW-MEK6030C	GW-MEK2406C #	-	-
Perfume	GW-PFM410C	-	GW-PFM1575C	GW-PFM846C	GW-PFM2010B	GW-PFM3010C		Perfume	-	-	-	GW-PFM6030C	-	-	-
Mackenzie	GW-MAC410C	-	-	-	-	GW-MAC3010C		Mackenzie	-	-	-	-	-	-	-
Sala	GW-SAA410C	-	GW-SAA1575C	-	-	GW-SAA3010C		Sala	-	-	-	-	-	-	-
Thames	GW-THA410C	-	-	-	-	GW-THA3010C		Thames	-	GW-THA1636C	GW-THA1606C	-	GW-THA2406C #	GW-THA3606C #	-
Avon	GW-AVO410C	-	GW-AVO1575C	-	-	GW-AVO3010C		Avon	GW-AVOLFB	GW-AVO1636C	-	-	GW-AVO2406C #	GW-AVO3606C #	-
Indus	-	-	-	-	-	-		Indus	GW-INDLFB	-	-	-	GW-IND2406C #	GW-IND3606C #	-
Frosted Glass:								Frosted Glass:							
Arctic FROSTED	GW-ART410F	-	-	-	-	-		Arctic FROSTED	-	GW-ART1636F	-	-	-	-	-
Volga FROSTED	GW-VOL410F	-	-	-	-	-		Volga FROSTED	-	-	-	-	-	-	-



# Please see pages 77-79 for important information on Splashbacks.  
 # Merci de regarder les pages 77-79 pour des informations importantes concernant les « Splashbacks »  
 # Bitte beachten Sie weitere wichtige Informationen zu Splashbacks auf den Seiten 77-79.  
 # Kijk alstublieft op bladzijde 77-79 voor de belangrijke informatie over Splashbacks.  
 # Пожалуйста, см. Страницы 77-79 для получения важной информации о Splashbacks.

# how many tiles will you need?

De combien de carreaux aurez-vous besoin? / Wie viele Fliesen brauchen Sie? / Hoeveel mozaïektegels hebt u nodig? / Сколько плитки вам понадобится?

Nominal size*		Per m <sup>2</sup>	Per ft <sup>2</sup>
Tiles / Carreaux / Fliesen / Tegels			
100 x 100mm	4" x 4"	100.0	9.0
152 x 50mm	2" x 6"	131.0	12.0
152 x 75mm	3" x 6"	86.0	8.0
200 x 98mm	4" x 8"	50.0	4.5
200 x 100mm	4" x 8"	50.0	4.5
1 x Hexagon Sheet	-	17.5	1.63
300 x 100mm	4" x 11¾"	33.33	3.06
398 x 80mm	3⅞" x 15¾"	31.0	2.9
398 x 198mm	7⅞" x 15¾"	12.5	1.2
600 x 300mm	11⅜" x 23⅞"	5.55	0.52
600 x 750mm	29½" x 23⅞"	3.70	0.21
900 x 750mm	29½" x 35⅞"	2.22	0.14
1000 x 140mm	5½" x 39⅞"	7.14	0.67

Borders / Bordures / Borten / Randen		Per linear m	Per linear ft
298mm	11¾"	3.4	1.0
300mm	11¾"	3.3	1.0
398mm	15¾"	2.5	0.76

\*All of the above dimensions are subject to a tolerance of ± 25mm or 3/32". Quantities shown exclude grout gaps between each tile. Please allow an additional 5% for cutting/wastage.

\*Remarque: Toutes les dimensions précédentes sont sujettes à une tolérance de ± 25 mm. Les quantités démontrées n'incluent pas les joints entre les carreaux. Nous vous recommandons de prévoir au moins 5% supplémentaires pour les chutes.

\*Beachten Sie bitte: Alle oben genannten Abmessungen können Abweichungen von ± 25mm aufweisen. Angegebene Mengen schliessen die Fugen zwischen jeder Fliese aus. Es empfiehlt sich, mindestens 5% Material für etwaigen Bruch einzuplanen.

\*Voor alle afmetingen geldt een tolerantiewaarde van ± 25mm. Voeg openingen tussen tegels zijn niet meegerekend in de aangegeven hoeveelheden. Houd rekening met vijf procent snijverlies.

\*Все размеры выше указаны с погрешностью ±25 мм. В указанном количестве не учтены зазоры между плитками. Прибавьте допуск на отходы в размере 5%.

## DIMENSIONS

Nominal dimensions for all Original Style Glassworks tiles are shown throughout the brochure. Actual dimensions for individual tiles may vary from these figures. We recommend you allow for at least an additional 5% for cutting/wastage.

## DIMENSIONS

Les dimensions nominales de tous les carreaux Glassworks sont indiquées au fil de la brochure. En raison de la méthode de fabrication les dimensions réelles de chaque carreau peuvent être légèrement différentes des chiffres indiqués donc nous vous recommandons de prévoir au moins 5 % supplémentaires pour les découpes/chutes.

## ABMESSUNGEN

Die Abmessungen aller Original Style Glassworks Fliesen in dieser Broschüre sind Nennwerten. Die tatsächlichen Abmessungen einzelner Fliesen können von diesen Werten abweichen. Es empfiehlt es sich, mindestens 5% mehr Material für etwaigen Bruch oder falschen Zuschnitt einzuplanen.

## AFMETINGEN

De nominale afmetingen voor alle Original Style Glassworks tegels staan vermeld in de brochure. De werkelijke afmetingen kunnen afwijken van deze cijfers. We raden dat u minstens 5% toevoegtaan uw bestelling voor snijverlies.

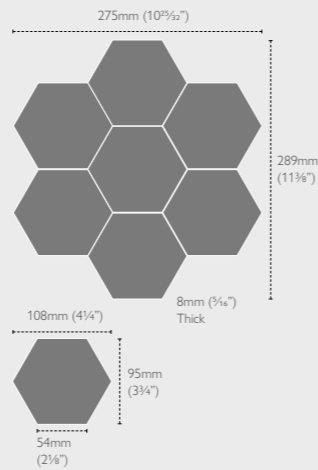
## РАЗМЕРЫ

Номинальные размеры всей плитки Original Style Glassworks указаны в брошюре. Реальные размеры каждой плитки могут отличаться от указанных. Мы рекомендуем учитывать допуск на отходы не менее 5%.

## HEXAGONS

Metallic effect range:  
GW-SONHEXMOS  
GW-DIOHEXMOS  
GW-ERBHEXMOS

Futura range:  
GW-FSHMOS  
GW-FZHMOS  
GW-FGHMOS



# important information

## SUITABILITY

Most glassworks tiles and splashbacks are suitable for internal walls in both wet and dry areas, in residential and commercial applications – please see suitability symbols for individual products.

They are not suitable for:

- worktops, as they are susceptible to scratching,
- floors
- external use
- installation in submerged conditions such as swimming pools or fish tanks
- installation over substrates that are subject to movement such as wood or fibreglass
- fire place recesses and wood burner surrounds

If installed in direct sunlight the colours may fade.

## SHADING

As each tile is individually coloured, there may be distinctive yet subtle variations in shade, especially between batches. This is an inherent feature of Original Style tiles. You may wish, therefore, to spend some time to achieve the most pleasing distribution of shades before fixing. When planning designs it is important to dry lay the tiles prior to fixing. This is particularly relevant regarding Metallica tiles. We recommend that you buy all the tiles you need for your project at one time. Decorative tiles are made individually and therefore unique. Because of the way they are made, Aurora Borealis tiles have distinct differences between them, and if they are placed together they may not match or line up with each other, however the overall effect will be stunning. Tiles, mosaics and splashbacks of the same colour but with a different thickness may vary in tone.

There may also be shade variations with Champagne and Zinc splashbacks and tiles.

The backs of these tiles and mosaics are painted by hand and so each individual tile will be unique: Arabia, Arabia Mosaic, Ammon Mosaic, Siva Mosaic

## ARCTIC WHITE TILES

Please be aware that the Arctic White colour is achieved by using an optical clear glass. When two tiles of different length are placed side by side the amount of light passing through the tile can affect the colour. This effect is caused by refraction, prismatic effect or chromatic aberration. We recommend that any voids (eg. corners) are fully filled before tiling to avoid this or other shadowing effects. The glass should also be cut using a suitable glass cutting electric tile saw with a glass cutting blade, with any uneven edges filed away with a suitable glass file. NB Arctic White splashbacks must NOT be cut.

## SPLASHBACKS

Care must be taken when handling all splashbacks before and during installation. Most of Original Style Glassworks splashbacks have been tested to British Standards BS EN 12150. These splashbacks have been made from toughened (also known as tempered) glass, which is a type of safety glass. Toughened glass should receive the same care as annealed (ordinary) glass. Careless handling and improper installation sometimes causes edge damage, and delayed breakage can occur when edge-damaged tempered glass is subjected to mechanical stress, as in installation. Further, if cut, knocked or dropped, this material will produce instantaneous total fragmentation.

DO NOT under any circumstances attempt to cut or drill splashbacks as they will shatter.

However these Aurora Borealis splashbacks can be cut, as they not made from toughened glass. However they should be handled and treated in exactly the same way as those made from toughened glass:

GVV-AQA2406C, GW-AQA3606C Aurora Borealis Aqua

The other glass tiles, including upstands, can be cut. An acceptable tile cutter would be a water fed disc cutter with a glass cutting blade or a score and snap cutter fitted with a suitable scribing wheel. Appropriate safety precautions must be taken when cutting glass.

Please refer to our Fixing Guide at [www.originalstyle.com/guides](http://www.originalstyle.com/guides)

## MIRROR FACET MOSAICS

The Mirror Facet mosaics (pages 24/25/27) may have sharp edges. Please take extra care during handling and installation.

## INSTALLATION

Please visit [www.originalstyle.com/fixing-guides/](http://www.originalstyle.com/fixing-guides/) to view our fixing guides and instructional videos on how to cut and install glass tiles.

## Near Heat Sources

All Glassworks tiles including Splashbacks must be installed a minimum of 3cm (1¼") from any heat source. This will include any hot water pipework concealed within walls and any radiant heat sources such as hobs, heated towel rails or radiators. Hot pans must not come in direct contact with glass Splashbacks.

When fixing glass tiles in wet areas the walls must be fully waterproofed (tanked) prior to tiling.

We do not recommend using Glass Strip Borders on areas subject to movement, i.e. timber walls, as the substrate may cause glass strips to fracture.

## Grouting

Always allow a 2-3mm grout gap.

Glass tiles must NEVER be butt jointed against one another as they could either crack or de-bond.

Please refer to the Fixing Guide at [www.originalstyle.com/guides](http://www.originalstyle.com/guides) before commencing any installations as Original Style cannot accept responsibility for any faults after tiles have been fixed.

In the USA please follow the recommendations of reputable product manufacturers in conjunction with our Fixing Guide at [www.originalstyle.com/guides](http://www.originalstyle.com/guides) and always comply with American National Standards Institution (ANSI) specifications as set out in the Handbook for Ceramic Tile Installation published by the Tile Council of America. Useful links: [ctioa.org](http://ctioa.org), [tileusa.com](http://tileusa.com)

## OTHER ORIGINAL STYLE RANGES

Other Original Style products, such as mosaics, ceramic, porcelain and stone tiles, which are shown in this brochure, have their own installation requirements. Please ensure you refer to the relevant Original Style brochure and Fixing Guides at [www.originalstyle.com](http://www.originalstyle.com) for these products before installing.

## PHOTOGRAPHY

Owing to variations in studio lighting and printing inks, the tile colours shown in this catalogue may differ slightly from those of the actual tiles. Before making your choice it is always advisable to ask your Original Style retailer to show you samples.

## LIMITS OF LIABILITY

Original Style accepts no liability for the faulty installation of its products. In the case of any claim relating to the tiles themselves, Original Style's liability, to the extent permitted by law, is limited to either the replacement of the product or a refund of the cost of the product, and does not extend to cover any consequential loss. Claims must be reported within seven working days from receipt of the tiles. Tiles must be inspected prior to installation and claims cannot be considered after the tiles have been installed. Please be advised that installation constitutes acceptance of the quality, colour, size, texture and shade of the tiles. Original Style warrants that its tiles conform to their description and are fit for their purpose. Original Style makes no other express or implied warranty as to fitness or suitability of the products for particular installations. We extend no guarantees, express or implied, as to wear resistance or maintenance procedures. It is imperative to follow grout and adhesive manufacturers' instructions regarding their suitability with our products. If in doubt please consult the grout/adhesive stockist from whom you purchased the products. Original Style makes no representations as to the fitness for purpose of third party adhesives and grouts. Please note the use of certain acid based cleaning products may cause some of the tiles to react and change in character.

# informations essentielles

## USAGES

La plupart des carreaux Glassworks et Splashbacks conviennent aux murs internes de zones sèches et humides, dans des installations commerciales et domestiques – veuillez-vous référer aux symboles pour connaître l'usage de chaque produit.

Ils ne conviennent pas pour :

- Les plans de travail car ils sont sensibles aux rayures,
- Les sols,
- Les usages extérieurs,
- L'installation dans des conditions immergées comme les piscines ou aquariums,
- L'installation sur des supports sujets au mouvement comme le bois ou la fibre de verre,
- Les niches de cheminée et autour des poêles à bois

Si les carreaux Glassworks sont installés à la lumière directe du soleil, les couleurs peuvent s'estomper.

## TEINTES

Les carreaux de verre étant colorés individuellement, ils peuvent présenter des variations et nuances surtout entre « bains » différents. Il s'agit là d'un trait de caractère propre aux carreaux Glassworks et Serenity Original Style. Nous vous conseillons par conséquent de prendre le temps nécessaire pour distribuer les teintes de manière harmonieuse avant de coller vos carreaux. Ceci s'applique surtout aux carreaux Metallica donc il est préférable de commander tous vos carreaux en même temps. Les carreaux décoratifs sont tous fabriqués séparément, pour cette raison ils sont uniques. En raison de la méthode de production les Splashbacks et carreaux satinés « Aurora Borealis » présenteront des différences de carreau à carreau donc les marquages ne se marieront pas parfaitement, néanmoins l'effet final sera superbe. Les carreaux, mosaïques et Splashbacks de la même couleur mais avec une épaisseur différente peuvent avoir une variation de teinte.

Il peut aussi y avoir des variations de teinte avec les carreaux et Spashbacks Champagne et Zinc. Le dos de ces carreaux et mosaïques sont peints à la main, ainsi chaque carreau sera unique : Arabia, Arabia Mosaic, Ammon Mosaic, Siva Mosaic.

## CARREAUX Arctic WHITE

Il faut savoir qu'en raison de l'utilisation de verre transparent pour fabriquer les carreaux Arctic White si deux carreaux de longueur différents sont placés côte à côte la couleur peut paraître légèrement différente selon la lumière qui les traverse. Cet effet est causé par la réfraction, effet prismatique ou aberration chromatique. Nous recommandons de remplir pleinement tous les vides (ex : angles) avant de poser les carreaux afin d'éviter tout effet d'ombre. Il faut aussi couper les carreaux à l'aide d'un coupe-carrelage adapté et limer les bords vifs avec une lime spécialement pour le verre. NB – Les Splashbacks Arctic White ne doivent pas être découpés.

## SPLASHBACKS

Veillez toujours manipuler les Splashbacks avec le plus grand soin, aussi bien avant que pendant leur installation. La plupart des Splashbacks d'Original Style ont été testés conformément à la norme britannique BS EN 12150. Ceux-ci sont fabriqués en verre trempé, une variété de verre de sécurité. Le verre trempé doit être manipulé tout aussi soigneusement que le verre recuit (le verre ordinaire). Une manipulation peu soignée et une mauvaise installation peuvent endommager les bords, et les carreaux aux bords abîmés pourront finir par se briser lorsque le verre trempé est soumis à une tension mécanique, par exemple au cours de l'installation. De plus, ce matériau se fragmentera instantanément et totalement s'il est découpé, s'il tombe ou s'il reçoit un choc.

NESSAYEZ PAS, sous aucune circonstance, de découper ou de perforez un Splashback car il se brisera. Les Splashbacks Aurora Borealis ne sont pas en verre trempé et peuvent donc être découpés mais doivent tout de même être manipulés avec grand soin :

GVV-AQA2406C, GW-AQA3606C Aurora Borealis Aqua

Les autres carreaux de verre, y compris les « Upstands », peuvent être découpés. Un outil adapté pour ce faire serait un coupe-disque alimenté à l'eau avec une lame pour la découpe en verre, ou un outil de traçage équipé d'une roue à tracer adapté. Des précautions de sécurité appropriées doivent être prises lors de la coupe du verre. Merci de vous reporter au guide d'installation sur [www.originalstyle.com/guides](http://www.originalstyle.com/guides)

## MOSAÏQUES MIRROR FACET

Les mosaïques Mirror Facet (pages 24/25/27) peuvent avoir les bords coupants. Veuillez donc les manipuler avec le plus grand soin durant l'installation.

## INSTALLATION

Utilisation à proximité d'une source de chaleur

Original Style recommande d'installer tous carreaux en verre, les Splashbacks inclus, à au moins 3 cm des sources de chaleur. Sont incluses ici toutes les tuyauteries d'eau chaude dissimulées à l'intérieur des cloisons ainsi que toutes les sources de chaleur rayonnantes telles que les sèche-serviette ou les radiateurs. Les casseroles chaudes ne doivent pas entrer en contact direct avec les Splashbacks.

Si vous installez les carreaux en verre dans des zones humides, les murs doivent être imperméabilisés avant de carreler.

Nous ne recommandons pas l'usage des Glass Strip Bordes sur des zones sujettes au mouvement, cad les murs et ossatures en bois, car le support pourrait causer la fissure des bandes de verre.

## Joints

Nous recommandons un espace de 2-3mm pour les joints.

Les carreaux en verre de doivent JAMAIS carreler sans écart pour les joints car ils pourraient se fissurer ou se décoller.

Merci de vous reporter au guide d'installation sur [www.originalstyle.com/guides](http://www.originalstyle.com/guides) avant de commencer l'installation de votre carrelage Original Style car nous ne pouvons accepter la responsabilité pour les défauts une fois l'installation faite.

## AUTRES GAMMES ORIGINAL STYLE

L'installation des autres produits Original Style présentés dans la brochure, tels que les mosaïques, les carreaux en porcelaine, céramique et les pierres, nécessite des précautions différentes.

Veillez-vous reporter à la brochure Original Style correspondante ou au guide d'installation sur [www.originalstyle.com](http://www.originalstyle.com) avant de procéder à l'installation.

## PHOTOGRAPHIES

L'éclairage en studio et les encres utilisées pour l'impression peuvent affecter les couleurs des carreaux présentés dans ce catalogue. Avant de passer votre commande, il est toujours préférable de vous procurer des échantillons auprès d'un revendeur Original Style.

## LIMITATION DE RESPONSABILITE

Original Style dégage toute responsabilité en cas d'installation incorrecte de ses produits. En cas de réclamation relative aux carreaux eux-mêmes, la responsabilité d'Original Style sera confinée, dans la limite autorisée par la loi, au remplacement du produit ou au remboursement du prix du produit, et ne couvre pas les dommages indirects. Toute réclamation doit être effectuée dans les sept jours suivant la réception des carreaux. Les carreaux doivent être inspectés avant installation. Aucune réclamation ne sera prise en compte une fois les carreaux installés. Notez que l'installation du carrelage constitue l'acceptation de la qualité, de la couleur, de la texture, de la taille et de la teinte des carreaux. Original Style garantit que ses carreaux sont conformes au descriptif fourni et qu'ils sont adaptés à l'usage pour lequel ils sont prévus. Original Style ne formule aucune garantie expresse ou implicite supplémentaire vis-à-vis de l'adéquation ou de la compatibilité de ses produits dans des installations spécifiques. Nous ne formulons aucune garantie, expresse ou implicite, vis-à-vis de la résistance à l'usure ou des procédures d'entretien.

Il est impératif de suivre les instructions des fabricants de colles et de ciments-joints afin d'en vérifier la compatibilité avec nos produits. En cas de doute, consultez le revendeur qui vous aura fourni la colle ou le ciment-joint. Original Style n'assume aucune responsabilité en ce qui concerne la compatibilité ou l'usage de colles et de ciments-joints tiers. Veuillez noter que l'utilisation de certains produits nettoiyants à base d'acide peut provoquer des réactions sur certains carreaux et en modifier les caractéristiques.

# tile suitability

Key to Symbols Signification des symboles / Symbolerklarung / Sleutel voor symbolen / Расшифровка СИМВОЛОВ	
	Wet and dry walls Murs secs et humides (dont douches et douches italiennes) Nass- und Trockenmauern (Inkl. Duschen und Nassraume) Natte en droge wanden (incl. douches) Для стен во влажных и сухих средах (вкл. душевые и гидроизолированные комнаты)

## wichtige informationen

ABMESSUNGEN

Bei allen Maßangaben in diesem Katalog handelt es sich um Nennwerte. Die tatsächlichen Maße einzelner Fliesen können von diesen Werten abweichen. Wir empfehlen mind. 5% mehr Material für Bruch oder Verschnitt einzuplanen.

EIGNUNG

Die meisten unserer Glassworks Fliesen und Splashbacks eignen sich für Trocken- und Feuchträume (nur Innenbereiche) sowie private und gewerbliche Bauvorhaben. Bitte beachten Sie die Eignungssymbolik in der jeweiligen Produktbeschreibung.

Glassworks Artikel eignen sich nicht für:

- Arbeitsflächen (Verkratzungsgefahr)
- Böden
- Außenbereiche
- Unterwasserinstallationen (z.B. Pools, Aquarien)
- Installationen über beweglichem Trägermaterial (z.B. Holz, Glasfaser)
- Kamin- und Brennöfen

Glassworks Fliesen können verblassen, wenn Sie direktem Sonnenlicht ausgesetzt werden.

FARBABWEICHUNGEN UND FARBNUANČEN

Da jede Fliese individuell koloriert wird, können einzelne Fliesen derselben Farbe in ihrer Tonalität voneinander abweichen, besonders zwischen Chargen. Dieses ist ein charakteristisches Merkmal von Original Style Fliesen. Legen Sie die Fliesen vor dem Verlegen lose aus, um etwaige Farbabweichungen gleichmäßig zu verteilen und die gewünschte Optik zu erzielen. Dies gilt besonders für Fliesen unserer Metallica-Serie. Wir empfehlen stets alle für ein Projekt benötigten Fliesen auf einmal zu kaufen. Dekorfliesen werden individuell hergestellt und sind daher Unikate. Aurora Borealis weisen aufgrund ihres Herstellungsprozesses unterschiedliche Farbverläufe auf, die sich nicht zwangsläufig aneinander ausrichten lassen. Dennoch ist die Gesamtwirkung beeindruckend. Fliesen, Mosaik und Splashbacks der gleichen Farbe, aber von unterschiedlicher Dichte, können ebenfalls verschiedene Nuancen aufweisen.

Die Farben Champagne und Zinc neigen ebenfalls verstärkt zu Farbabweichungen. Die Rückseiten der folgenden Fliesen werden von Hand eingefärbt und sind daher ebenfalls in Ihrer Farbgebung einzigartig: Arabia, Arabia Mosaic, Ammon Mosaic, Siva Mosaic.

Arctic weiße Fliesen:

Bitte beachten Sie, dass die Farbe Arctic White mit klarem optischen Glas erzeugt wird. Wenn zwei Fliesen unterschiedlicher Kantenlängen nebeneinander verlegt werden, kann der Lichteinfall die wahrgenommene Farbe beeinflussen. Dieser Effekt entsteht durch Refraktion, prismatische Effekte oder chromatische Aberration. Wir empfehlen alle Lücken (z. B. Ecken) vor dem Verlegen zu füllen, um Schatteneffekte zu vermeiden. Die Fliesen sollten außerdem mit einem geeigneten Schneidegerät mit Glasschneideblatt geschnitten und jegliche Unebenheiten mit einer Glasfeile vor Verlegung ausgeglichen werden. Splashbacks dürfen NICHT geschnitten werden.

SPLASHBACKS

Splashbacks müssen vor und während der Installation mit Sorgfalt behandelt werden. Der Großteil unserer Glassworks Splashbacks wurden nach der britischen Norm BS EN 12150 getestet. Sie sind aus gehärtetem Glas hergestellt (auch vorgespanntes Glas genannt), das eine Art von Sicherheitsglas darstellt. Hartglas muss mit der gleichen Sorgfalt behandelt werden wie vergütetes (gewöhnliches) Glas. Mangelnde Sorgfalt bei der Handhabung und unsachgemäße Installation kann Kantenschäden verursachen. Ein verzögerter Bruch kann auftreten, wenn kantengeschädigtes Hartglas einer mechanischen Beanspruchung ausgesetzt wird, wie z.B. bei der Verlegung. Wenn dieses Glas geschnitten, gestoßen oder fallen gelassen wird, zersplittert es sofort.

Versuchen Sie AUF KEINEN FALL Splashbacks zu schneiden oder zu bohren, da das Glas sonst zerbricht. Lediglich die Serie Aurora Borealis Splashbacks kann zugeschnitten werden, da diese nicht aus gehärtetem Glas gefertigt ist. Sie sollten sie jedoch mit der gleichen Sorgfalt wie Sicherheitsglas behandeln:

GW-AQA2406C, GW-AQA3606C Aurora Borealis Aqua

De andere glazen tegels, inclusief Upstands, kunnen worden gesneden. Wij adviseren hiervoor een natte tegelsnijder met een glazen zaagblad of een score-en-snap snijder uitgerust met een passend graveerwiel. Neem bij het snijden van glas altijd de veiligheidsmaatregelen in acht.
Lezen Sie hierzu bitte unsere Installationsanleitung unter [www.originalstyle.com/guides](#).

MIRROR-FACET MOSAICS

Verspiegelte Mosaik (S. 24/25/27) können scharfe Kanten haben. Bitte beachten Sie beim Verlegen entsprechende Vorsichtsmaßnahmen.

INSTALLATION IN DER NÄHE VON WÄRMEQUELLEN

Alle Glassworks Fliesen, einschließlich der Splashbacks, müssen mit einem Abstand von mindestens 3 cm zu Wärmequellen installiert werden. Hierzu zählen im Mauerwerk verlegte Heiz-/Wasserrohre, Heizkörper, Backöfen und Kochfelder sowie Handtuchwärmer. Heiße Pfannen und Töpfe dürfen nicht in direkten Kontakt mit Splashbacks gelangen.

Beim Verlegen von Glasfliesen in Feuchträumen müssen die Wände stets abgedichtet werden, so dass sie vollständig wasserdicht sind.

Wir empfehlen nicht, Glass Strip Borders auf sich bewegendem Trägermaterial zu installieren (z.B. Holzwände), da durch die entstehende Spannung diese Zierkanten splintern können.

VERFUGEN

Wir empfehle eine Fugenbreite von 2-3mm. Glasfliesen dürfen NIE fugenlos aneinandergesetzt werden, da diese springen oder sich lösen könnten.

Bitte beachten Sie vor der Verlegung unbedingt unsere Verlegeanleitung unter [www.originalstyle.com/guides](#). Eine Haftung seitens Original Style ist nach dem Verlegen ausgeschlossen.

WEITERE ORIGINAL STYLE PRODUKTE

Bitte beachten Sie, dass für Produkte anderer Original Style Serien, die in diesem Katalog abgebildet sind (z.B. Keramik und Naturstein) gesonderte Anforderungen und Installationshinweise gelten. Informationen hierzu finden Sie im entsprechenden Katalog oder unseren Verlegeanleitung unter [www.originalstyle.com](#).

PHOTOGRAPHIE

Aufgrund variierender Beleuchtungsverhältnisse im Studio oder bei Druckfarben können die im Katalog zu sehenden Farben geringfügig von der tatsächlichen Farbgebung abweichen. Bevor Sie Ihre Auswahl treffen, sollten Sie immer zuvor einen Einzelhändler für Original Style nach Mustern fragen.

HAFTUNGSBESCHRÄNKUNG

Original Style übernimmt für die fehlerhafte Installation seiner Fliesen keine Haftung. Sollte es Reklamationen bezüglich der Fliesen selbst geben, dann beschränkt sich die gesetzlich eingeräumte Haftung von Original Style lediglich auf den Artikelaustausch oder Kostenrückerstattung. Weitere Schäden werden nicht abgedeckt. Vor der Installation sind die Fliesen zu prüfen. Nachträgliche Reklamationen können nicht berücksichtigt werden.

Bitte beachten Sie, dass Sie durch die Installation anzeigen, dass hinsichtlich Qualität, Farbgebung, Textur, Größe oder Schattierung keine Beanstandungen vorliegen. Original Style gewährleistet die beschreibungs- und zweckgemäße Fabrikationsausführung der Fliesen.

Original Style gibt keine weiteren ausdrücklichen oder impliziten Garantien hinsichtlich Eignung der Artikel für besondere Installationsarten. Wir geben weder ausdrücklich noch implizit eine Garantieverlängerung auf Abnutzungsverhalten oder Wartungsarbeiten. Beachten Sie bitte, dass die Fliesen auf Säure basierte Reinigungsmittel reagieren und ihr Aussehen verändern können.

## belangrijke informatie

GESCHIKTHEID

De meeste Glassworks tegels en Splashbacks zijn geschikt voor muren in droge en natte ruimtes, voor residentiële en commerciële doeleinden – zie de geschiktheidsymbolen voor meer informatie.

Deze tegels zijn niet geschikt voor:

- Aanrechtbladen aangezien deze zullen krassen
- Vloeren
- Buitenmuren
- Installaties onder water zoals zwembaden en aquariums
- Installaties op ondergronden met beweging zoals hout en glasvezel
- In open haarden en om houtkachels

Wanneer de tegels in direct zonlicht geplaatst worden, kan de kleur mettertijd vervagen.

KLEURNUANCES

Omdat elke tegel afzonderlijk wordt gekleurd, kan er sprake zijn van zichtbare, subtiele kleurnuances, vooral tussen partijen. Dit is een karakteristieke eigenschap van Original Style tegels. Het kan de moeite lonen om, voordat de tegels worden aangebracht, de verschillende tinten zo te verdelen dat u tevreden bent over het geheel. Het is belangrijk dat u de tegels uitlegt voorafgaand aan het installeren bij het plannen van ontwerpen. Dit geldt met name voor de tegels van Metallica. We raden ten zeerste aan dat u alle benodigde tegels tegelijkertijd koopt. Decoratieve tegels worden per stuk gemaakt en zijn daarom uniek. Als gevolg van hoe de Aurora Borealis Splashbacks worden gefabriceerd, zijn er zichtbare verschillen deze de individuele tegels. Als meerdere tegels worden gebruikt in een installatie, dan kan het zijn dat de patronen niet op elkaar aansluiten. Het overkoepelende effect is echter prachtig. Tegels, mozaïeken en Splashbacks met dezelfde kleur, maar met verschillende dikte, kunnen in nuance variëren.

Wegens hun metallic effecten kunnen er ook kleurnuances zijn tussen Champagne en Zinc Splashbacks en glazen tegels. Arabia, Arabia Mosaic, Ammon Mosaic, Siva Mosaic. Doordat de achterkant van deze glazen tegels en mozaïeken met de hand geschilderd zijn, is iedere tegel uniek.

ARCTIC WHITE TILES

Omdat de kleur Arctic White wordt gecreëerd door gebruik te maken van optisch helder glas, moeten klanten zich ervan bewust zijn dat wanneer twee tegels van verschillende lengte naast elkaar geplaatst worden, de hooeveelheid licht dat door de tegels gaat, de kleur kan beïnvloeden. Dit effect is het gevolg van lichtbreking, prismatisch effect of chromatische aberratie. Wij raden aan dat openingen (bijvoorbeeld hoeken) volledig opgevuld worden voordat u begint met het installeren van de tegels om dit en andere schaduweffecten te voorkomen. Het glas moet daarnaast ook gesneden worden met een geschikte elektrische glassnijder met een zaagblad voor glazen tegels en oneffen randen weggevijld met een geschikte glasvijl. Arctic White Splashbacks mogen NIET gesneden worden.

SPLASHBACKS

Wees voorzichtig in de omgang met Splashbacks voorafgaand aan en tijdens de installatie. De meeste Original Style Glassworks Splashbacks zijn getest volgens de British Standards BS EN 12150. Deze splashbacks bestaan uit gehard glas (ook wel bekend als voorgespannen glas), een type veiligheidsglas. Gehard glas moet op dezelfde wijze worden verzorgd als gegloeid (normaal) glas. Onachtzame omgang en een verkeerde installatie kan soms leiden tot beschadigde hoeken. Op de lange termijn kan het glas breken als het geharde glas met beschadigde hoeken onderhevig is aan mechanische stress, zoals tijdens het zetten. Dit materiaal valt bovendien onmiddellijk volledig uiteen in kleine stukjes als het wordt gesneden, als u er tegenaan stoot of als u het laat vallen. Probeer NOOIT op enigerlei wijze een Splashback te snijden of erin te boren, aangezien deze uiteenspat. De splashbacks hieronder zijn niet van gehard glas gemaakt maar moeten op dezelfde wijze verzorgd en behandeld worden als gehard glas :

GW-AQA2406C, GW-AQA3606C Aurora Borealis Aqua

Unsere sonstigen Glasfliesen, einschließlich Upstands können geschnitten werden. Als Glasschneider eignet sich eine wassergekühlte Schneidemaschine mit einem für Glas geeigneten Schneideblatt oder alternativ, einem Schneiderädchen zum anritzen und brechen. Beim Schneiden von Glas sind entsprechende Vorsichtsmaßnahmen zu treffen. Raadpleeg onze installatiegids op [www.originalstyle.com/guides](#)

MIRROR FACET MOZAÏEKEN

De Mirror Facet mozaïeken (pagina 24/25/27) hebben mogelijk scherpe randen. Wees extra voorzichtig in de omgang met deze tegels voorafgaand aan en tijdens de installatie.

INSTALLATIE

Warmtebronnen

Alle Glassworks tegels, waaronder Splashbacks, moeten op minstens 3 cm van een warmtebron worden geplaatst. Dit geldt ook voor warmwaterleidingen in muren en stralingswarmtebronnen, zoals kookplaten, verwarmde handdoekrekken en radiatoren. Hete pannen mogen niet in directe aanraking komen met glazen Splashbacks.

Wanneer glazen tegels in natte ruimtes geplaatst worden, moeten de muren voor het tegelzetten volledig waterdicht gemaakt en afgedicht worden.

Wij raden aan dat glazen sierstrippen niet op ondergronden geplaatst worden waar beweging in kan voorkomen, zoals bijvoorbeeld hout, aangezien de strippen kunnen barsten.

Voegen

Houdt altijd een voegbreedte van 2-3mm aan. Glazen tegels moeten nooit voegloos (koud) geplaatst worden aangezien de tegels dan kunnen scheuren of onthechten.

Raadpleeg de installatiegids op [www.originalstyle.com/guides](#) voordat u begint met het leggen, aangezien Original Style niet verantwoordelijk is voor defecten nadat de tegels zijn gezet.

ANDERE PRODUCTEN VAN ORIGINAL STYLE

Andere Original Style producten in deze brochure, zoals mozaïeken en keramische, porseleinen en stenen tegels, hebben hun eigen installatierichtlijnen. Raadpleeg de juiste Original Style brochure en installatiegids e op [www.originalstyle.com/guides](#), voor deze producten voordat u ze installeert.

FOTOGRAFIE

Als gevolg van variaties in studiobelichting en printintken kunnen de in deze brochure afgebeelde kleuren enigszins afwijken van die van de daadwerkelijke tegels. We raden altijd aan dat u uw Original Style-leverancier vraagt om enkele voorbeelden.

AANSPRAKELIJKHEIDSBEPERKING

Original Style is niet aansprakelijk voor de verkeerde installatie van zijn producten. In geval van claims met betrekking tot de tegels zelf is de aansprakelijkheid van Original Style, voor zover dit wettelijk is toegestaan, beperkt tot het vervangen van het product of het vergoeden van de kosten van het product, en is gevolgschade niet inbegrepen. Claims moeten binnen zeven werkdagen na ontvangst van de tegels worden ingediend. De tegels moeten worden geïnspoeteerd voordat deze worden gezet. Claims worden niet behandeld nadat de tegels zijn gezet. We wijzen u erop dat tot de zetting het aanvaarden van de hooeveelheid, kleur, structuur, afmetingen en schakering van de tegels behoort. Original Style garandeert dat zijn tegels overeenkomen met hun omschrijving en geschikt zijn voor het beoogde gebruik. Original Style maakt geen andere uitdrukkelijke of impliciete garanties met betrekking tot de geschiktheid van de producten voor bepaalde installaties. We maken geen garanties, uitdrukkelijk of impliciet, ten aanzien van slijtagebestendigheid of onderhoudsmaatregelen.

Het is van groot belang dat de instructies van de producent voor voeg- en lijnmiddelen worden opgevolgd ten aanzien van hun geschiktheid in combinatie met onze producten. Raadpleeg de leverancier van de voeg- en lijnmiddelen van wie u de producten hebt gekocht in geval van twijfel. Original Style maakt geen beweringen over de geschiktheid voor gebruik van de lijmen en voegmiddelen van derde partijen. We wijzen u erop dat het gebruik van bepaalde bijtende reinigingsmiddelen kan leiden toteen reactie van de tegels, waarvan het uiterlijk kan veranderen.

## важная информация

РАЗМЕРЫ

Номинальные размеры всей плитки Original Style Glassworks указаны в брошюре. Реальные размеры каждой плитки могут отличаться от указанных. Мы рекомендуем учитывать допуск на отходы не менее 5%.

ВАРЬИРОВАНИЕ ПО ЦВЕТУ

Поскольку каждая плитка окрашивается индивидуально, возможно незначительное, но заметное отличие по цвету, особенно между плиткой из различных партий. Это характерная особенность плитки компании Original Style. Таким образом, перед укладкой вам может потребоваться некоторое время на то, чтобы обеспечить наиболее красивое распределение оттенков. При планировании дизайна обязательно предварительно разложите плитку на сухой поверхности, особенно если вы используете плитку Metallica. Мы настоятельно рекомендуем покупать всю плитку, необходимую для проекта, за один раз. Каждая декоративная плитка изготавливается индивидуально, а следовательно каждая плитка уникальна. Плитки, мозаики и Splashbacks одного цвета, но с разной толщиной по причине разной плотности различаются по тону.

В связи с особенностями методики изготовления между плиткой Aurora Borealis Splashbacks и матовой плиткой имеется значительная разница, поэтому если отдельные плитки положить рядом, они не будут подходить друг другу, однако общий эффект от выложенной ими поверхности будет потрясающим. Также вариации в тоне расцветки могут быть присущи плитке Champagne и Zinc Splashbacks. Arabia, Arabia Mosaic, Ammon Mosaic, Siva Mosaic. Обратная сторона этой плитки раскрашена вручную и поэтому каждая индивидуальная плитка уникальна.

ОСОБОЕ ЗАМЕЧАНИЕ: плитка Arctic White

Цвет Arctic White получается в результате использования оптического бесцветного стекла. Учтите, что при сравнении двух плиток разной димны количество света, проходящего через плитки, может повлиять на их цвет.

Данный эффект возникает в результате преломления лучей, призматического эффекта или хроматической абберрации. Во избежание данного эффекта, а также других эффектов затенения рекомендуется по возможности заполнять все пустоты на поверхности, выкладываемой плиткой. Стекло следует резать подходящим электрическим плиткорезом с резаком для резки стекла, а неровные края необходимо отшлифовать соответствующим напильником. ВАЖНО: Плитку Splashbacks НЕЛЬЗЯ резать.

ПЛИТКА SPLASHBACKS

Будьте осторожны при обращении с плиткой Splashbacks до и во время ее укладки. Плитка Original Style Glassworks Splashbacks прошла испытания на соответствие британскому стандарту BS EN12150. Данная плитка изготовена из закаленного (упрочненного) стекла, которое является разновидностью защитного стекла. Меры предосторожности при работе с закаленным стеклом такие же, как и при работе с отожженным (обычным) стеклом.

В случае неаккуратного обращения или неправильной установки возможно повреждение краев; также возможно повреждение стекла впоследствии, при оказании механического воздействия на закаленное стекло с поврежденными краями, как, например, при установке. В результате резка, удар или падение приводит к немедленному полному разбиванию данного материала. Ни при каких условиях НЕ пытайтесь резать или сверлить плитку Splashback, поскольку это приведет к ее разбиванию. Пройдите по ссылке [www.originalstyle.com/guides](#). Другую стеклянную плитку, в том числе бортики, можно резать. Приемлемым резаком для стекла является резак с дисковым ножом со спец лезвием для резки стекла с подачей воды или инструментом для резки. Ознакомьтесь с нашим Руководством по укладке, доступным по ссылке: [www.originalstyle.com/guides](#).

MIRROR FACET ПЛИТКА

Mirror Facet плитка (страницы 24/25/27) могут иметь острые края. Будьте внимательны при обращении и установке.

ВОЗДЕЙСТВИЕ ТЕПЛОМ

Всю плитку Glassworks, включая Splashbacks, необходимо укладывать не менее чем в 3см от любых источников тепла, которые включают среди прочего любые трубы с горячей водой, замурованные в стенах, и источники теплового излучения, такие как плиты, подогреваемые полотенцесушители и радиаторы. Не рекомендуется устанавливать стеклянную плитку рядом с источниками огня. Не допускайте прямого контакта горячей посуды со стеклянной плиткой Splashbacks.

При фиксации стеклянных плиток во влажных помещениях стены должны быть полностью гидроизомированы перед инстоляцией.

Мы не рекомендуем использовать стеклянные полосы для инстоляции на участках, подлежащих движению, то есть на деревянных стенах, поскольку подложка может привести к их разрушению.

МЕСТА, ПОДХОДЯЩИЕ ДЛЯ ИСПОЛЬЗОВАНИЯ ПЛИТКИ

Большинство Glassworks и Splashbacks продуктов подходит для внутренних стен как на влажных, так и на сухих участках, в жилых и коммерческих помещениях - см. Символы пригодности для отдельных продуктов.

Данная плитка не подходит для использования:

- как столешницы, поскольку она подвержена царапинам
- для полов
- для установки снаружи
- для установки в погруженных условиях, таких как бассейны или аквариумы
- для установки на поверхностях, подверженных смещению, таких как дерево или стекловолокно
- для каминных ниш и вблизи печ

Если они установлены под прямым солнечным светом, плитка может обесцветится.
УКЛАДКА, КЛЕЯЩИЕ ВЕЩЕСТВА, ЗАТИРКИ, ЧИСТКА И УХОД

ЗАТИРКА

Всегда допускайте 2-3-миллиметровый зазор.

Стеклянные плитки НИКОГДА не должны стыкаться друг с другом, поскольку они могут либо расколоться, либо отквалиться.

Прежде чем начинать укладку плитки, ознакомьтесь с Руководством по укладке, которое можно скачать по ссылке [www.originalstyle.com/guides](#). Компания Original Style не несет ответственности за любые дефекты уже уложенной плитки.

ДРУГАЯ ПРОДУКЦИЯ КОМПАНИИ ORIGINAL STYLE

В данной брошюре представлена также другая продукция компании Original Style, такая как мозаичная, керамическая, фарфоровая и каменная плитка. На данную продукцию распространяются соответствующие требования по укладке. При укладке такой продукции обязательно ознакомьтесь с соответствующей брошюрой Original Style и Руководством по инсталляции в [www.originalstyle.com](#) для этих продуктов перед установкой.

Фотография

С учетом освещения в студии и типографической краски, цвет плитки на фотографиях, представленных в данной брошюре, может незначительно отличаться от фактического цвета плитки. Рекомендуется потребовать образец плитки у поставщика Original Style.

Ограничение ответственности

Компания Original Style не несет ответственности за дефекты при установке ее продукции. При возникновении претензий относительно качества плитки, ответственность компании Original Style в установленных законом случаях ограничена либо заменой товара, либо возмещением его стоимости, и не распространяется на возмещение косвенных убытков. О претензиях необходимо сообщать в течение 7 рабочих дней после получения плитки. Плитку следует проверить до ее установки. После установки плитки претензии не принимаются. Просьба обратить внимание, что установка плитки означает отсутствие претензий к ее качеству, цвету, размерам, текстуре и оттенкам. Компания Original Style гарантирует, что плитка соответствует ее описанию и пригодна для использования в надлежащих целях. Компания Original Style не предоставляет ни прямых, ни косвенных гарантий соответствия или пригодности товара для конкретных видов установки. Мы не обеспечиваем ни прямые, ни косвенные гарантии износоустойчивости и исправности.

Просьба отметить, что использование определенных чистящих средств на кислотной основе способно привести к возникновению химической реакции и изменению свойств плитки.

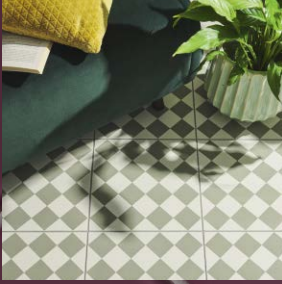




**Tileworks**  
Contemporary porcelain and ceramic tiles for walls and floors



**Mosaics**  
Glorious mosaics in huge range of styles and materials



**Odyssey**  
Patterned wall and floor tiles in a range of styles



**Winchester Tile Collection**  
Hand crafted wall tiles in a choice of sumptuous glazes

**GENERAL ENQUIRIES**

Tel: +44 (0)1392 473004

**UK SALES**

Tel: +44 (0)1392 473000

**EXPORT SALES**

Tel: +44 (0)1392 473001

Email: [info@originalstyle.com](mailto:info@originalstyle.com)

Website: [www.originalstyle.com](http://www.originalstyle.com)



**ORIGINALSTYLE**

Tiles to Inspire

The 'Original Style' logo is a registered trade mark of Original Style Ltd.  
Original Style Limited is registered in England number 3018117. Registered Office: Falcon Road, Sowton Industrial Estate, Exeter, Devon EX2 7LF, England

Your Original Style stockist

£2.00 €3.00 \$3.50

IM-0026488 GW-GLBROCH5/07/21

Printed using Vegetable inks  
and Green energy

© Copyright Original Style Ltd 2021



**WORLD  
LAND  
TRUST™**

[www.carbonbalancedpaper.com](http://www.carbonbalancedpaper.com)  
CBP00019082504183028



**FSC**  
[www.fsc.org](http://www.fsc.org)

**MIX**

Paper from  
responsible sources  
**FSC® C022913**